

WAAS CH <b>49222</b> <b>W08A</b>	APP CRS <b>084°</b>	Rwy Idg TDZE Apt Elev	<b>6002</b> <b>698</b> <b>698</b>
--	------------------------	-----------------------------	---

RNAV (GPS) RWY 8

WEST MICHIGAN RGNL (BIV)

RNP APCH - GPS.

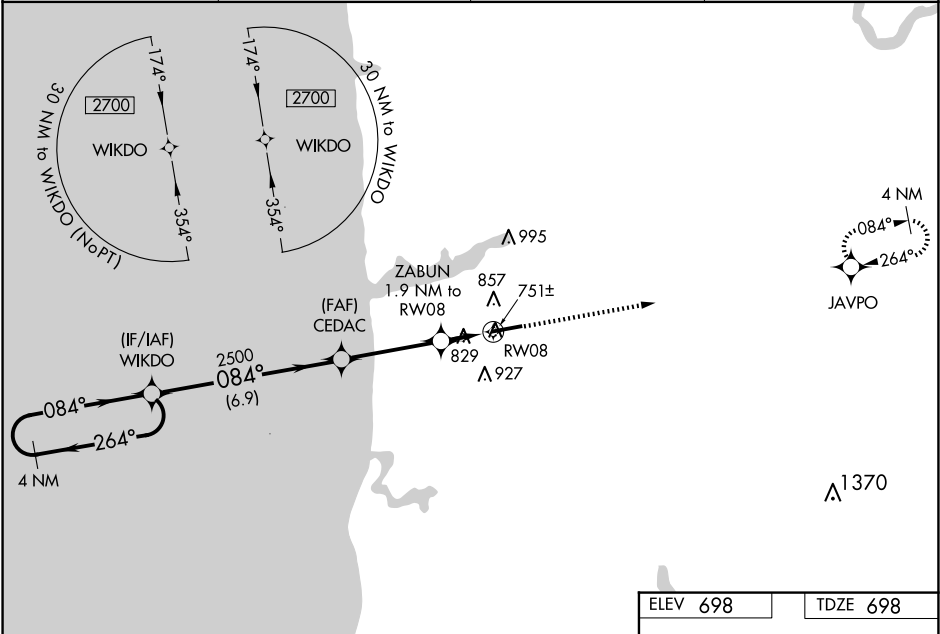
⚠

⚠

For uncompensated Baro-VNAV systems, LNAV/VNAV NA below -16°C or above 54°C. When local altimeter setting not received, use Muskegon altimeter setting: increase LPV DA to 1018 feet, increase LNAV/VNAV DA to 1160 feet, and all visibilities ¼ SM, increase all MDAs 80 feet, and visibility LNAV Cat C/D ¼ SM and Circling Cat C/D ¼ SM. Baro-VNAV and VDP NA when using Muskegon altimeter setting.

MISSED APPROACH:  
Climb to 3000 direct JAVPO and hold.

ASOS <b>119.025</b>	GREAT LAKES APP CON* <b>133.825 290.35</b>	CLNC DEL <b>123.95</b>	UNICOM <b>123.05 (CTAF) 1</b>
------------------------	---	---------------------------	----------------------------------



4 NM Holding Pattern		WIKDO	*LNAV only		3000	JAVPO
2700		← 264°	084° →			
GP 3.00°		2500		CEDAC		ZABUN
TCH 40		6.9 NM		2500		1.9 NM to RWY 08
				*1340		1.1 NM to RWY 08
				0.8 NM		1.1 NM
CATEGORY	A	B	C	D		
LPV DA	948-7⁄8		250 (300-7⁄8)			
LNAV/VNAV DA	1080-1 1⁄8		382 (400-1 1⁄8)			
LNAV MDA	1080-1	382 (400-1)	1080-1 1⁄8	382 (400-1 1⁄8)		
CIRCLING	1200-1 502 (600-1)	1240-1 542 (600-1)	1240-1 1⁄2 542 (600-1 1⁄2)	1320-2 622 (700-2)		

ELEV 698 TDZE 698

084° to RWY 08

REIL Rwy 8 1

HIRL Rwy 8-26 1