

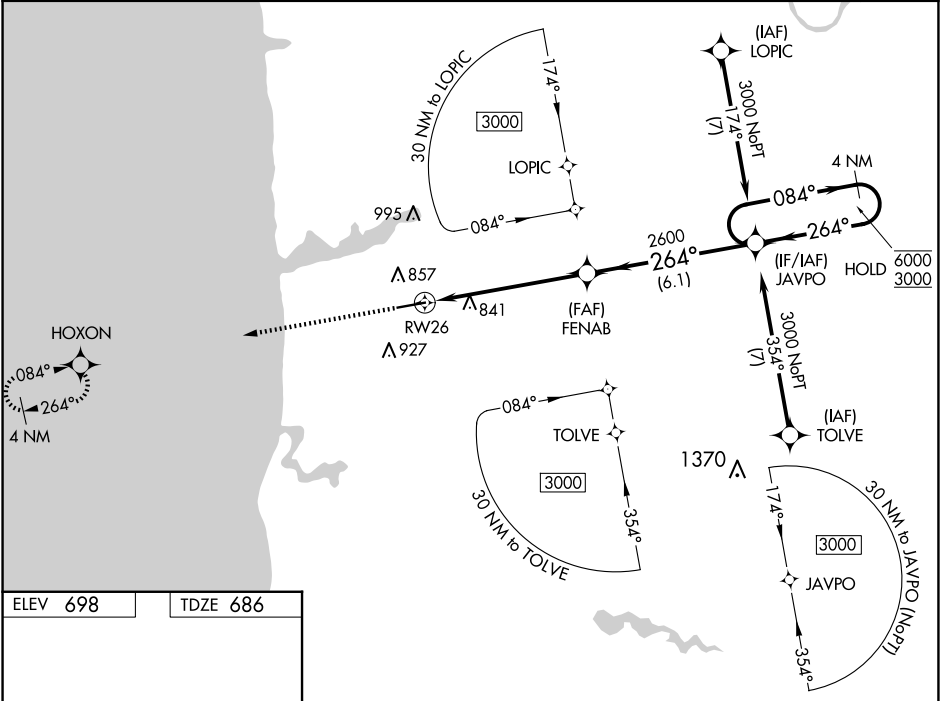
WAAS CH 53402 W26A	APP CRS 264°	Rwy Idg TDZE 686 Apt Elev 698
--	------------------------	---

RNAV (GPS) RWY 26

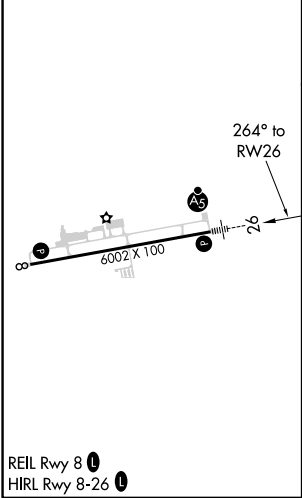
WEST MICHIGAN RGNL (BIV)

RNP APCH. <div><div>▼</div><div>▲</div></div> For uncompensated Baro-VNAV systems, LNAV/VNAV NA below -16°C or above 54°C. For inoperative ALS, increase LNAV/VNAV all Cats visibility to 1 SM; increase LNAV Cat C visibility to 1 ½ SM.	MALSR <div><div>AS</div><div>AS</div></div>	MISSED APPROACH: Climb to 2700 direct HOXON and hold.
---	--	--

ASOS 119,025	GREAT LAKES APP CON* 133.825 290,35	CLNC DEL 123,95	UNICOM 123.05 (CTAF) <div><div>U</div></div>
------------------------	---	---------------------------	--



ELEV 698	TDZE 686
-----------------	-----------------



2700	HOXON	*LNAV only	JAVPO	4 NM Holding Pattern
2600	FENAB	*1.2 NM to RW26	2600	GP 3.00° TCH 32
1.2	4.7 NM	6.1 NM		
CATEGORY	A	B	C	D
LPV DA	886-½	200 (200-½)		NA
LNAV/VNAV DA	1040-⅝	354 (400-⅝)		NA
LNAV MDA	1100-½	414 (500-½)	1100-¾ 414 (500-¾)	NA
CIRCLING	1200-1 502 (600-1)	1240-1 542 (600-1)	1240-1½ 542 (600-1½)	NA