

LOC/DME I-BIV
110.55
Chan **42 (Y)**

APP CRS
264°

Rwy Idg
TDZE
6002
686
Apt Elev
698

ILS or LOC RWY 26

WEST MICHIGAN RGNL (BIV)

DME required.

NA

MALSR

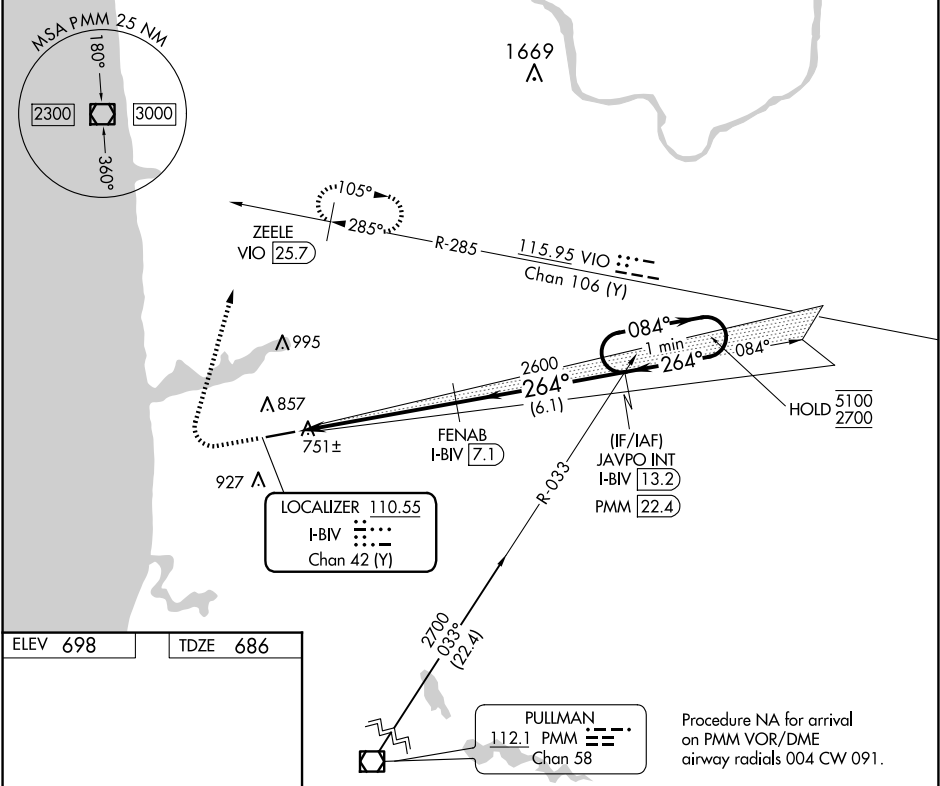
MISSED APPROACH: Climb to 1500 then climbing right turn to 2600 on heading 020° and VIO VOR/DME R-285 to ZEELE/VIO 25.7 DME and hold.

ASOS
119.025

GREAT LAKES APP CON*
133.825 290.35

CLNC DEL
123.95

UNICOM
123.05 (CTAF) 0



ELEV 698 TDZE 686

REIL Rwy 8

HIRL Rwy 8-26

1500

2600

hdg R-285

VIO 25.7

FENAB I-BIV 7.1

JAVPO INT I-BIV 13.2

One Minute Holding Pattern

*LOC only

*I-BIV 2.1

I-BIV 1.2

2600

264°

084°

5100 2700

GS 3.00° TCH 32

0.9 NM

5 NM

6.1 NM

CATEGORY	A	B	C	D
S-ILS 26	886-1/2	200 (200-1/2)		NA
S-LOC 26	1020-1/2	334 (400-1/2)		NA
CIRCLING	1200-1 502 (600-1)	1240-1 542 (600-1)	1240-1 1/2 542 (600-1 1/2)	NA