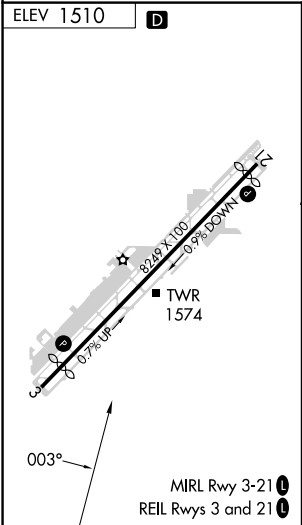
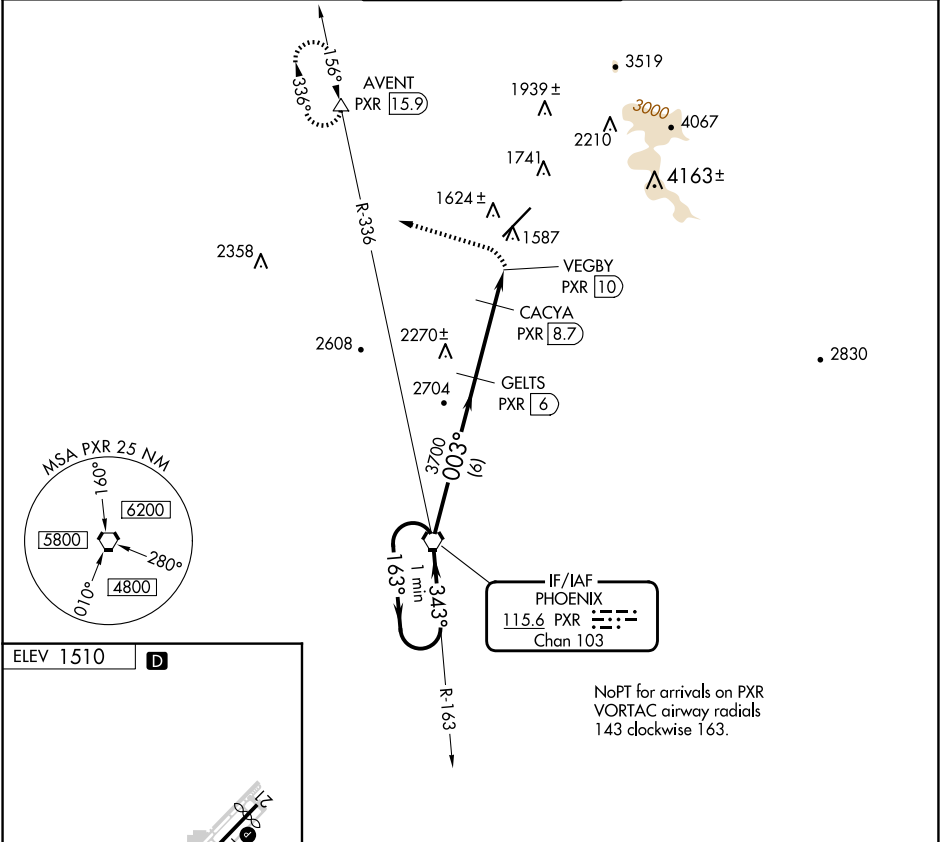


VORTAC PXR 115.6 Chan 103	APP CRS 003°	Rwy Idg TDZE Apt Elev 1510	N/A N/A
---	------------------------	--	--------------------------

VOR/DME-A
SCOTTSDALE (SDL)

 When local altimeter setting not received, use Phoenix Sky Harbor altimeter setting and increase all MDA 100 feet and increase visibility Cat C ¼ SM.	MISSED APPROACH: Climbing left turn to 7000 on heading 280° and on PXR VORTAC R-336 to AVENT/PXR 15.9 DME and hold, continue climb-in-hold to 7000.
---	---

ATIS 118.6	PHOENIX APP CON 120.7 239.0	SCOTTSDALE TOWER★ 119.9 (CTAF) 0	GND CON 121.6	CLNC DEL 124.8
----------------------	---------------------------------------	--	-------------------------	--------------------------



One Minute Holding Pattern		PXR VORTAC	GELTS PXR 6	7000 PXR R-336	AVENT
4200 ← 163° → 343° →		003°	3700	2700	VEGBY PXR 10
		6 NM	2.7 NM	1.3 NM	
CATEGORY	A	B	C	D	
CIRCLING	2380-1½	870 (900-1½)	2460-2¾ 950 (1000-2¾)	3300-3 1790 (1800-3)	