

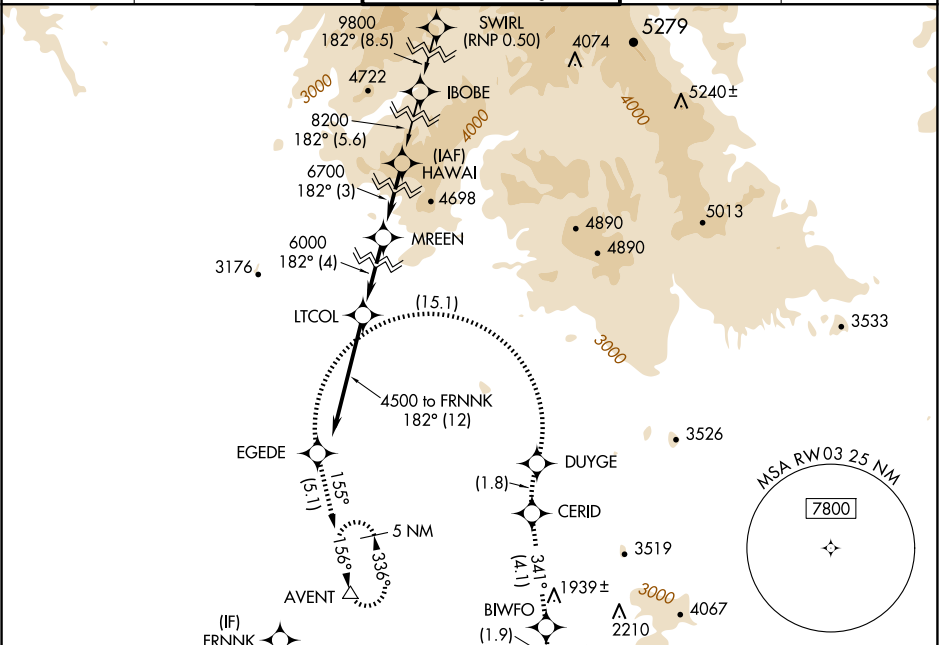
APP CRS	Rwy Idg	7110
032°	TDZE	1470
	Apt Elev	1510

RNAV (RNP) Y RWY 3  
SCOTTSDALE (SDL)

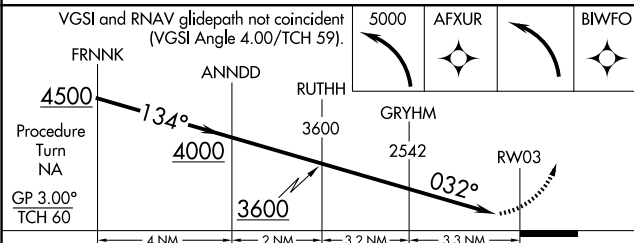
**T** RF and GPS required. Visibility reduction by helicopters NA. For uncompensated Baro-VNAV systems, procedure NA below 1°C (31°F) or above 54°C (130°F). When local altimeter setting not received procedure NA. Missed approach requires RNP less than 1.0.

**MISSED APPROACH:** Climb to 5000 via left turn to AFXUR, and via left turn to BWFO, and via track 341° to CERID, and via right turn to DUYGE, and via left turn to EGEDE, and via track 155° to AVENT and hold.

ATIS <b>118.6</b>	PHOENIX APP CON <b>120.7 239.0</b>	SCOTTSDALE TOWER★ <b>119.9 (CTAF) 0</b>	GND CON <b>121.6</b>	CLNC DEL <b>124.8</b>
----------------------	---------------------------------------	--	-------------------------	--------------------------

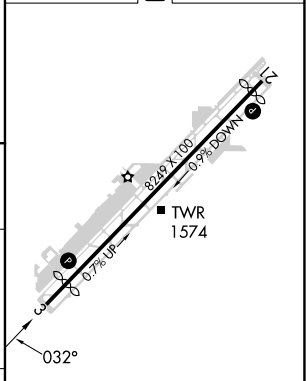


ELEV 1510	<b>D</b>	TDZE 1470
-----------	----------	-----------



CATEGORY	A	B	C	D
RNP 0.30 DA	1829-1¼	359 (400-1¼)		NA

## AUTHORIZATION REQUIRED



MIRL Rwy 3-21 **L**  
REIL Rwys 3 and 21 **L**