

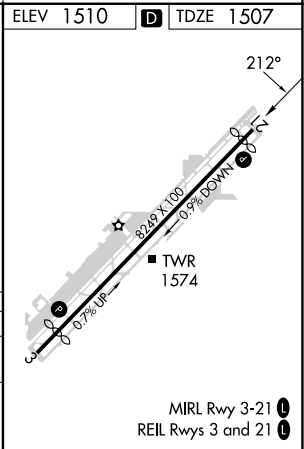
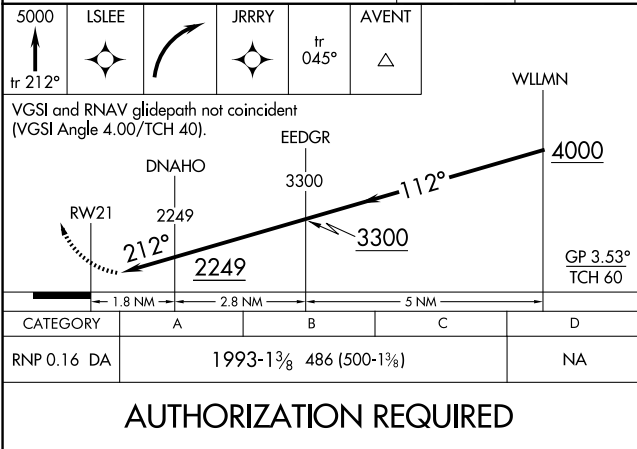
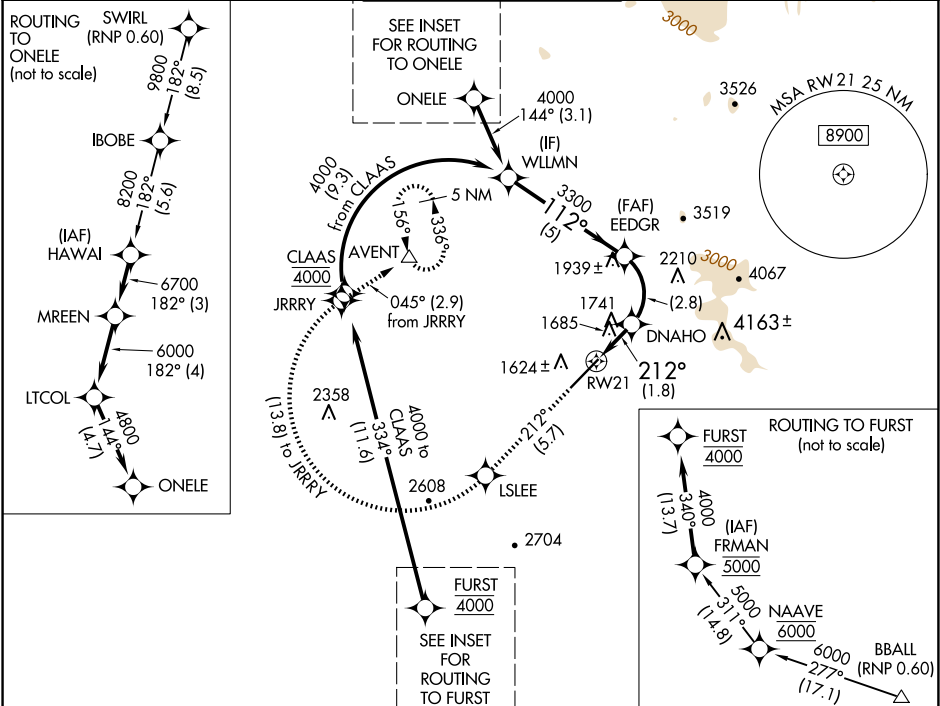
APP CRS	Rwy Idg	7669
212°	TDZE	1507
	Apt Elev	1510

RNAV (RNP) RWY 21

SCOTTSDALE (SDL)

RNP AR APCH - GPS, RF, min RNP 0.60. Authorization required.	MISSED APPROACH: Climb to 5000 on track 212° to LSLEE and right turn to JRRRY and on track 045° to AVENT and hold.
▼ For uncompensated Baro-VNAV systems, procedure NA below 1°C or above 54°C. When local altimeter setting not received procedure NA.	

ATIS 118.6	PHOENIX APP CON 120.7 239.0	SCOTTSDALE TOWER ★ 119.9 (CTAF) 0	GND CON 121.6	CLNC DEL 124.8
----------------------	---------------------------------------	---	-------------------------	--------------------------



SW-4, 10 JUL 2025 to 07 AUG 2025

SW-4, 10 JUL 2025 to 07 AUG 2025