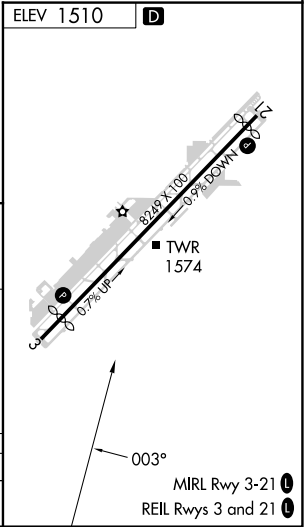
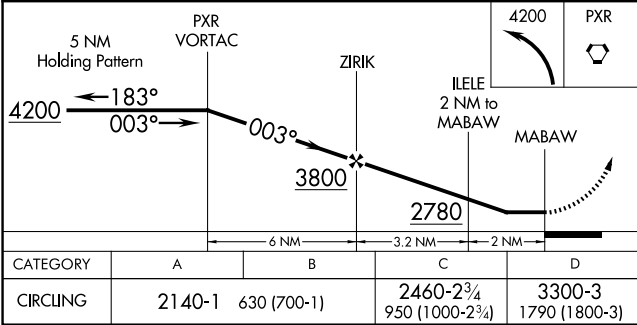
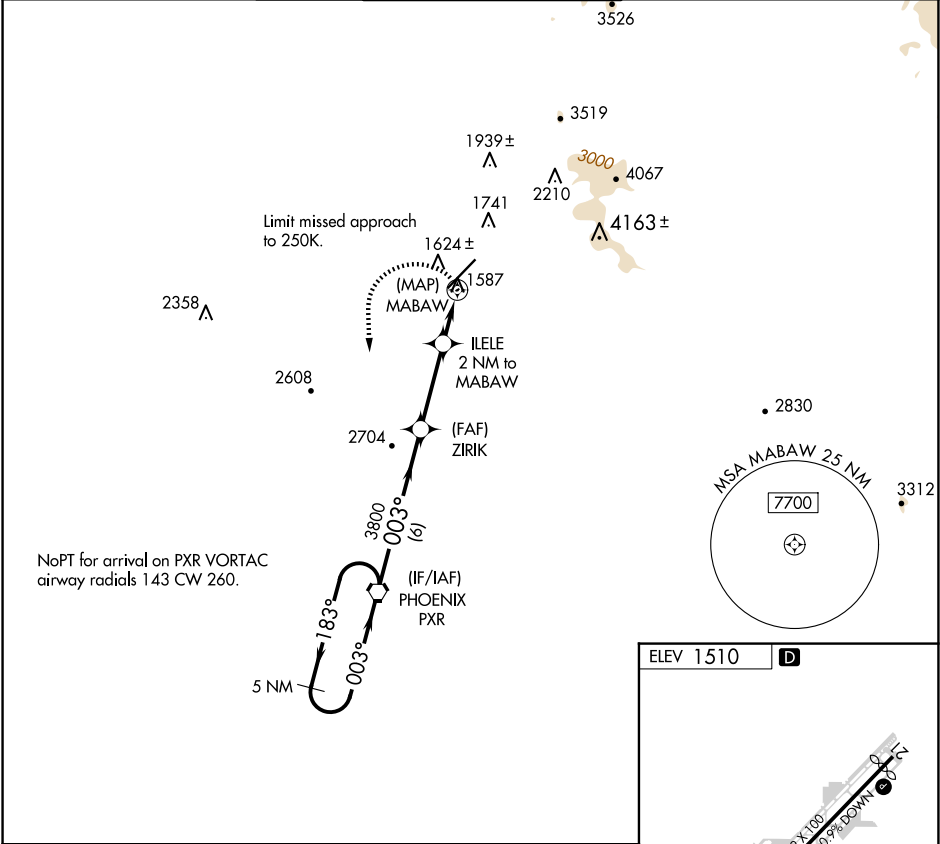


APP CRS	Rwy Idg	N/A
003°	TDZE	N/A
	Apt Elev	1510

RNAV (GPS)-E
SCOTTSDALE (SDL)

<p>⚠ When VGSI inoperative, circling Rwy 21 NA at night. When local altimeter setting not received, use Phoenix Sky Harbor Intl altimeter setting and increase all MDA 100 feet and increase visibility Cat C ¼ SM. DME/DME RNP-0.3 NA.</p>	<p>MISSED APPROACH: Climbing left turn to 4200 direct PXR VORTAC and hold.</p>
--	---

ATIS 118.6	PHOENIX APP CON 120.7 239.0	SCOTTSDALE TOWER* 119.9 (CTAF) 0	GND CON 121.6	CLNC DEL 124.8
----------------------	---------------------------------------	--	-------------------------	--------------------------



SW-4, 10 JUL 2025 to 07 AUG 2025

SW-4, 10 JUL 2025 to 07 AUG 2025