

PHOENIX DEP CON
120.7 239.0
ATIS
118.6
CLNC DEL
124.8
GND CON
121.6
SCOTTSDALE TOWER*
119.9

TOP ALTITUDE:
ASSIGNED BY ATC

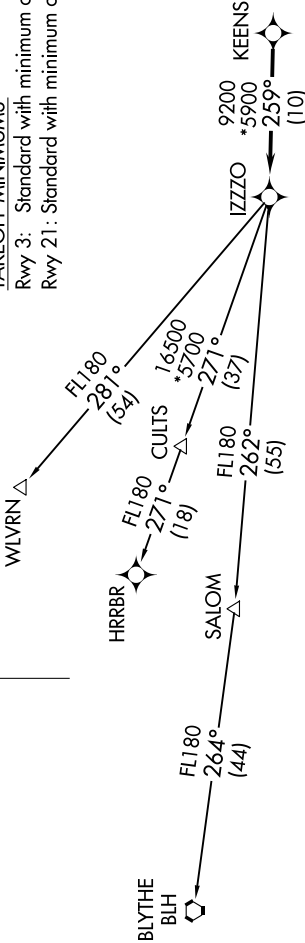
- NOTE: Turbojets and turboprops only.
NOTE: Aircraft requesting FL220 and below must file BLYTHE Transition..
NOTE: Turbojets landing LAX, file WLVRN Transition.
NOTE: Aircraft landing other than LAX and turboprops landing at LAX: Requesting FL240 and above, file HRRBR Transition.
NOTE: Aircraft departing KGEU and KGYR ATC assigned only.
NOTE: Rwy 21: Do not exceed 210K until established on assigned heading.

(IZZZO8.IZZZO) 25051

IZZZO EIGHT DEPARTURE (RNAV)

AL-5651 (FAA)

SCOTTSDALE (SDL)
SCOTTSDALE, ARIZONA

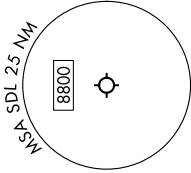


TAKEOFF MINIMUMS
Rwy 3: Standard with minimum climb of 445' /NM to 4600.
Rwy 21: Standard with minimum climb of 300' /NM to 4600.

DEPARTURE ROUTE DESCRIPTION

TAKEOFF RUNWAY 3: Climbing left turn heading 335° or as assigned by ATC, thence. . .
TAKEOFF RUNWAY 21: Climbing right turn heading 335° or as assigned by ATC. Thence. . .
... for RADAR vectors to KEENS, then on track 259° to IZZZO, then on (transition).
Maintain ATC assigned altitude, expect filed altitude 3 minutes after departure.

- BLYTHE TRANSITION (IZZZO8.BLH)
HRRBR TRANSITION (IZZZO8.HRRBR)
WLVRN TRANSITION (IZZZO8.WLVRN)



NOTE: Chart not to scale.

IZZZO EIGHT DEPARTURE (RNAV)
(IZZZO8.IZZZO) 25JAN24

SCOTTSDALE, ARIZONA
SCOTTSDALE (SDL)