

## TAKEOFF MINIMUMS

Rwy 3: Standard with minimum climb of 445' per NM to 4600.

Rwy 21: Standard with minimum climb of 300' per NM to 4600.

NOTE: RNAV 1.

**NOTE:** Turbojets and turboprops only.

NOTE: RADAR required.

**NOTE:** GPS required.

NOTE: ABQ transition ATC assigned only.

NOTE: Aircraft filing over ACH, LBL, ONM, CNX, PNH, MMB, TCC,

IRW and TXO file FTHLS DEPARTURE.

NOTE: Aircraft filing over ABQ, CIM, FTI, and GCK file LALUZ DEPART

NOTE: Aircraft filing over DE

YOTES DEPARTURE.

PHOENIX DEP CON

120.7 239.0

# ATIS

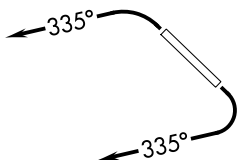
118.6

CLINC 1

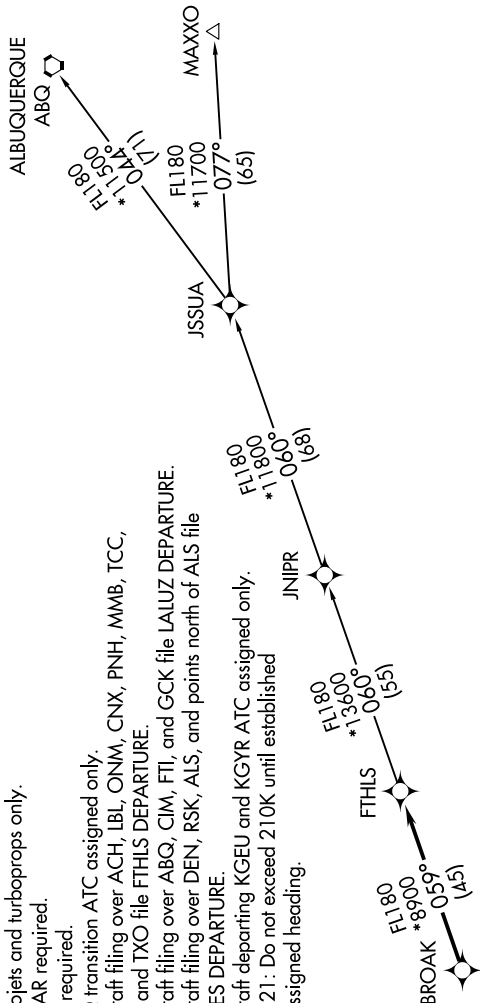
124.8

GND C

21.6 SCOTTSDALE TOWNSHIP ★



**TOP ALTITUDE:  
ASSIGNED BY ATC**



DEPARTURE ROUTE DESCRIPTION

TAKEOFF RUNWAY 3: Climbing left turn heading 335° or as assigned by ATC, thence. . . .  
TAKEOFF RUNWAY 21: Climbing right turn heading 335° or as assigned by ATC. Thence. . . .

...expect RADAR vectors to BROAK, then on track 059° to FTHLS, then on (transition).  
Maintain ATC assigned altitude, expect filed altitude 3 minutes after departure.

ALBUQUERQUE TRANSITION (FTHLS6.ABQ)

INIPP TRANSITION (ETHICS &amp; INIPP)

# THE UNIVERSITY OF CHICAGO

NOTE: Chart not to scale.

SW-4, 10 JUL 2025 to 07 AUG 2025