

WAAS CH 49219 W16A	APP CRS 160°	Rwy Idg 5000 TDZE 573 Apt Elev 586
--	------------------------	---

RNAV (GPS) RWY 16

SHELBY COUNTY (EET)

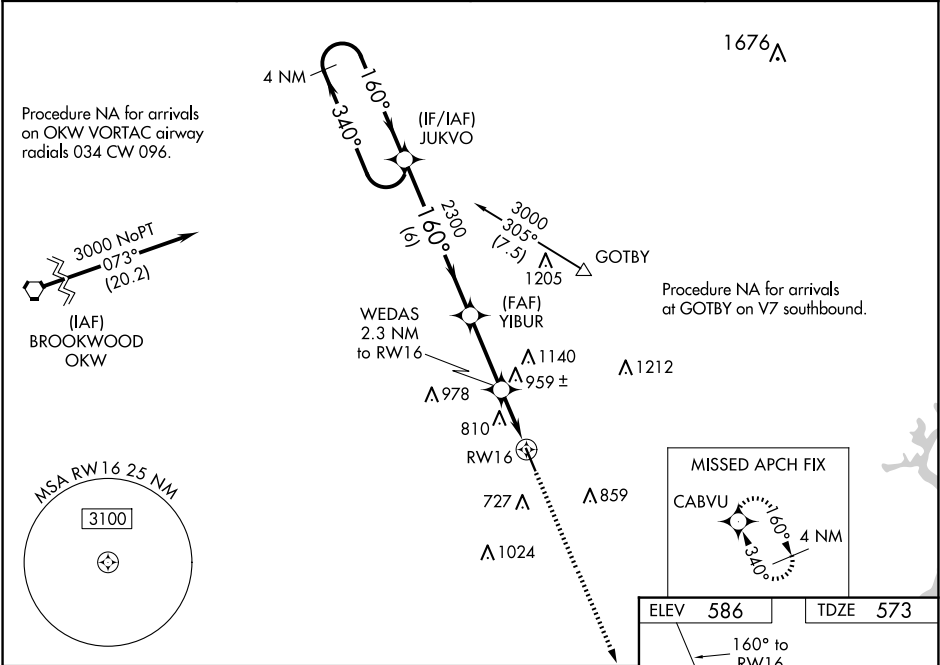
▼

⚠

DME/DME RNP-0.3 NA. Visibility reduction by helicopters NA. When local altimeter setting not received, use Birmingham altimeter setting and increase all DA 63 feet and all MDA 80 feet; increase LPV all Cats, LNAV/VNAV all Cats and LNAV Cats C/D and Circling Cat C visibilities ¼ SM. Baro-VNAV NA when using Birmingham altimeter setting. For uncompensated Baro-VNAV systems, LNAV/VNAV NA below -16°C (4°F) or above 47°C (116°F).

MISSED APPROACH: Climb to 3000 direct CABVU and hold.

ASOS 134.325	BIRMINGHAM APP CON 123.8 256.8	GCO 121.725	UNICOM 122.7 (CTAF) 0
------------------------	--	-----------------------	--



	ELEV 586	TDZE 573
	160° to RW16	0.3% UP
	3000 CABVU	
	YIBUR 2300	
	WEDAS 2.3 NM to RW16	
	RW16	
	*LNAV only	
	*1360	
	6 NM	2.9 NM
	2.3 NM	
CATEGORY	A	B
LPV DA	931-1¼	358 (400-1¼)
LNAV/VNAV DA	1176-2	603 (600-2)
LNAV MDA	1220-1 647 (700-1)	1220-1¾ 647 (700-1¾)
CIRCLING	1220-1 634 (700-1)	1340-2¼ 754 (800-2¼)
		1220-2 647 (700-2)
		1580-3 994 (1000-3)
		MIRL Rwy 16-34 0
		REIL Rwy 16 and 34 0