

APP CRS  
**127°**

Rwy Idg  
TDZE  
**882**

Apt Elev  
**887**

RNAV (GPS) RWY 13

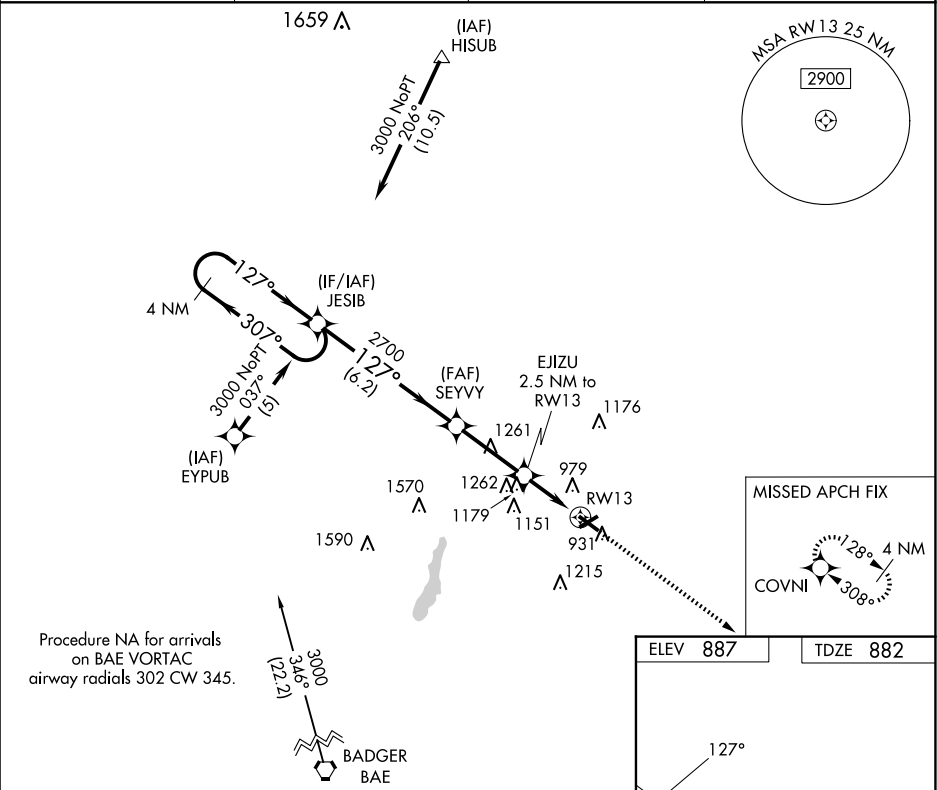
WEST BEND MUNI (ETB)

RNP APCH - GPS.

When local altimeter setting not received, use Milwaukee/Lawrence J Timmerman altimeter setting: increase all MDA 80 feet and increase LNAV Cat C/D visibility ½ SM and Circling Cat C/D visibility ¼ SM. Night landing: Rwy 6 NA. Helicopter visibility reduction below ¾ SM NA.

MISSED APPROACH:  
Climb to 3000 direct COVNI and hold.

AWOS-3 <b>120.0</b>	MILWAUKEE APP CON <b>125.35 307.0</b>	CLNC DEL <b>124.75</b>	UNICOM <b>123.05 (CTAF) 0</b>
------------------------	--	---------------------------	----------------------------------



4 NM Holding Pattern

JESIB

3000

307°

127°

127°

SEYVY

EJIZU 2.5 NM to RWY 13

3.05° TCH 37

2700

1720

RWY 13

6.2 NM

3 NM

2.5

3000

COVNI

CATEGORY	A	B	C	D
LNAV MDA	1480-1 598 (600-1)	1480-1½ 598 (600-1½)	1480-1¾ 598 (600-1¾)	
CIRCLING	1480-1 593 (600-1)	1520-1 633 (700-1)	1560-2 673 (700-2)	1560-2¼ 673 (700-2¼)

REIL Rwy 13 and 31 0

MIRL Rwy 6-24 and 13-31 0