

APP CRS
173°

Rwy ldg
TDZE
Apt Elev

5000
343
343

RNAV (GPS) RWY 18

NACOGDOCHES A L MANGHAM JR RGNL (OCH)

RNP APCH-GPS.

▼
▲

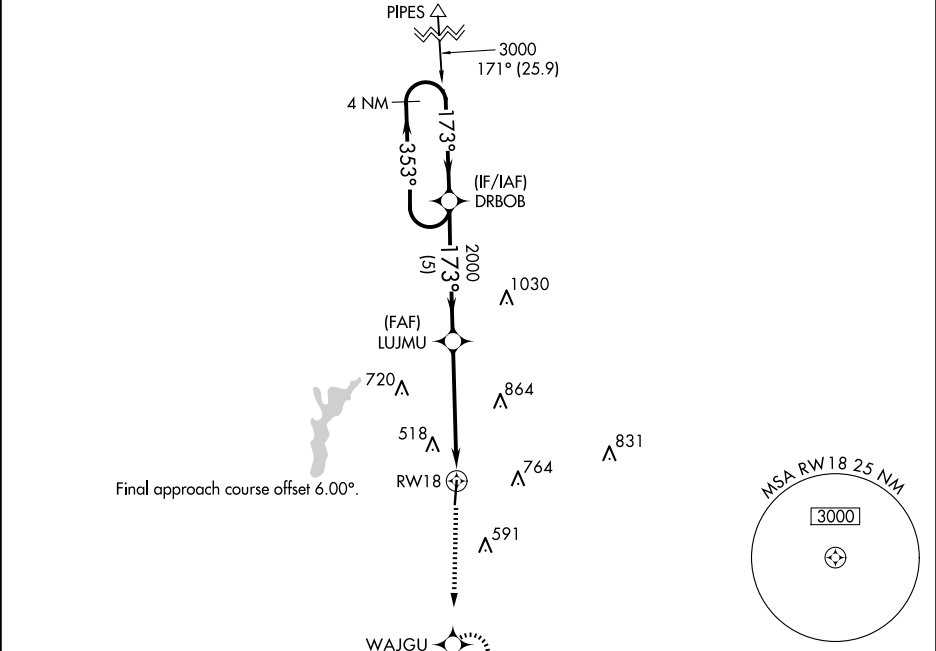
Rwy 18 helicopter visibility reduction below 1 SM NA. When local altimeter setting not received, use Lufkin altimeter setting and increase all MDA 60 feet and visibility LNAV Cat C and Circling Cat C ¼ SM.

MISSED APPROACH: Climb to 2400 direct WAJGU and hold.

AWOS-3PT
135.625

HOUSTON CENTER
125.175 285.575

UNICOM
123.0(CTAF) 0



Procedure NA for arrival on LFK VORTAC airway radials 318 CW 082.

3000 to DRBOB 355° (35.3)

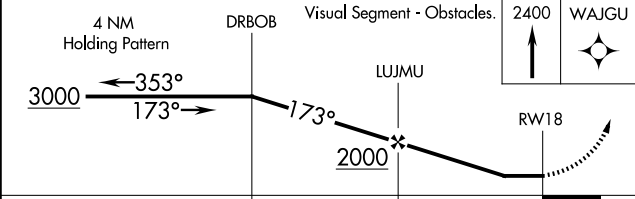
LUFKIN LFK

WAJGU

801

4 NM

1361



CATEGORY	A	B	C	D
LNAV MDA	980-1	637 (700-1)	980-1¾ 637 (700-1¾)	NA
CIRCLING	980-1	637 (700-1)	1080-2 737 (800-2)	NA

