

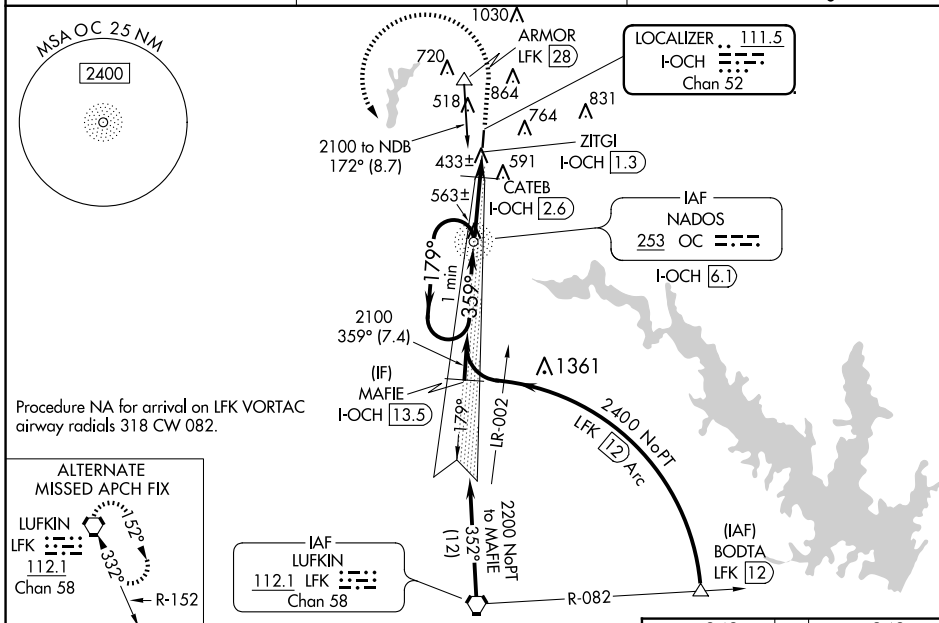
ILS or LOC RWY 36
NACOGDOCHES A L MANGHAM JR RGNL (OCH)

NA When local altimeter setting not received, use Lufkin altimeter setting: increase S-ILS 36 DA to 599 feet; increase all MDA 60 feet and visibility S-LOC 36 and Circling Cat C and CATEB FIX minimums S-LOC 36 and Circling Cat C ¼ SM. VDP NA when using Lufkin altimeter setting. Localizer unusable inside 0.3 NM from threshold. Autopilot coupled approach NA below 740.



MISSED APPROACH: Climb to 1000 then climbing left turn to 2100 direct NADOS/OC NDB and hold.

AWOS-3PT 135.625	HOUSTON CENTER 125.175 285.575	UNICOM 123.0 (CTAF) 0
----------------------------	--	---------------------------------



* 820 when using Lufkin altimeter setting.

One Minute Holding Pattern

[illegible]

CATEGORY	A	B	C	D
S-ILS 36	543-½ 200 (200-½)			NA
S-LOC 36	760-½ 417 (500-½)		760-¾ 417 (500-¾)	NA
CIRCLING	860-1 517 (600-1)		1080-2 737 (800-2)	NA
CATEB FIX MINIMUMS (DME REQUIRED)				
S-LOC 36	700-½ 357 (400-½)		700-⅝ 357 (400-⅝)	NA
CIRCLING	860-1 517 (600-1)		1080-2 737 (800-2)	NA

FAF to MAP 4.8 NM					
Knots	60	90	120	150	180
Min:Sec	4:48	3:12	2:24	1:55	1:36