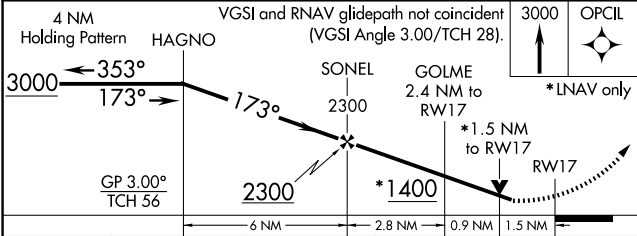
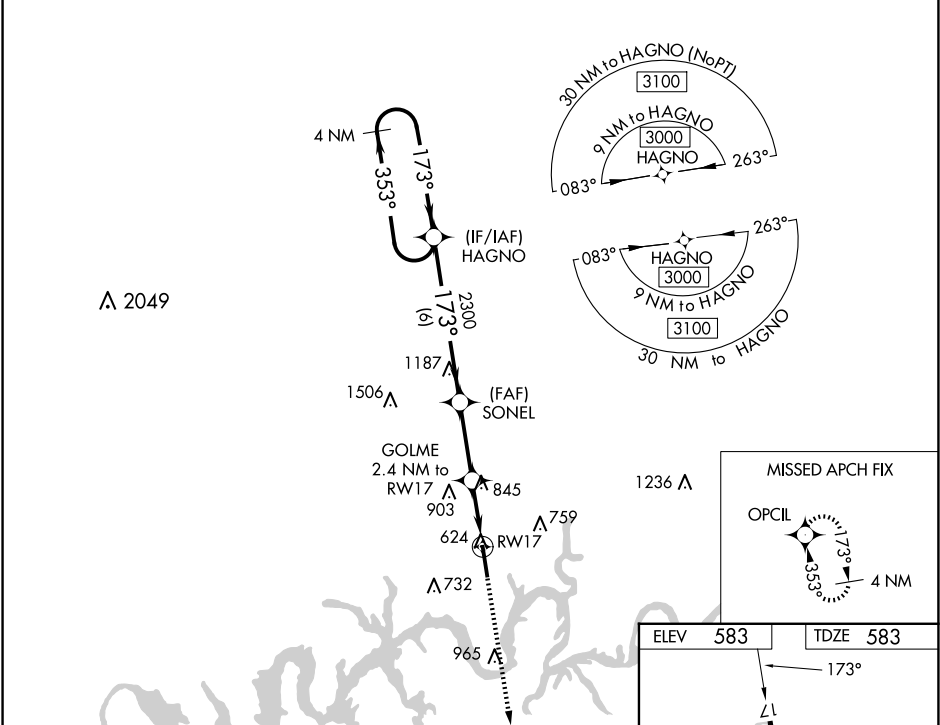


WAAS CH 70725 W17A	APP CRS 173°	Rwy Idg TDZE Apt Elev	6300 583 583
--	------------------------	-----------------------------	---

RNAV (GPS) RWY 17

MUSIC CITY EXEC (XNX)

RNP APCH. <div><div>▼</div><div>▲</div></div> <div>For uncompensated Baro-VNAV systems, LNAV/VNAV NA below -16°C or above 54°C. Rwy 17 helicopter visibility reduction below ¾ SM NA.</div>			MISSED APPROACH: Climb to 3000 direct OPCIL and hold.
AWOS-3 132.725	NASHVILLE APP CON 118.4 360.7	GCO 135.075	UNICOM 123.05 (CTAF) 0



CATEGORY	A	B	C	D
LPV DA		1069-1⅓	486 (500-1⅓)	
LNAV/VNAV DA		1075-1⅓	492 (500-1⅓)	
LNAV MDA	1100-1	517 (600-1)	1100-1⅓	517 (600-1⅓)
CIRCLING	1100-1 517 (600-1)	1120-1 537 (600-1)	1240-1¾ 657 (700-1¾)	1280-2¼ 697 (700-2¼)

