

TIFFIN, OHIO

AL-5645 (FAA)

23054

VORTAC FBC 108.2 Chan 19	APP CRS 073°	Rwy Idg 4000 TDZE 786 Apt Elev 786
--	------------------------	---

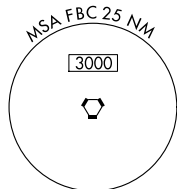
VOR RWY 6
SENECA COUNTY (16G)

DME required.

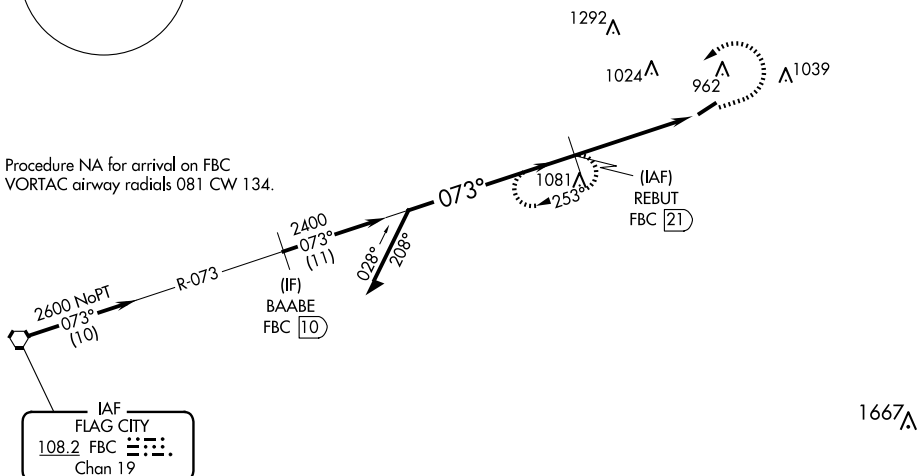
T Circling to Rwy 24 NA at night. Rwy 6 helicopter reduction below $\frac{3}{4}$ SM NA. When
A NA local altimeter not received, use Findlay altimeter setting and increase all MDA 60
 feet and S-6 Cat C visibility $\frac{1}{8}$ SM and Circling Cat C visibility $\frac{1}{4}$ SM.

MISSED APPROACH: Climb to 2400 then left turn on FBC VORTAC R-073 to REBUT/FBC 21 DME and hold.

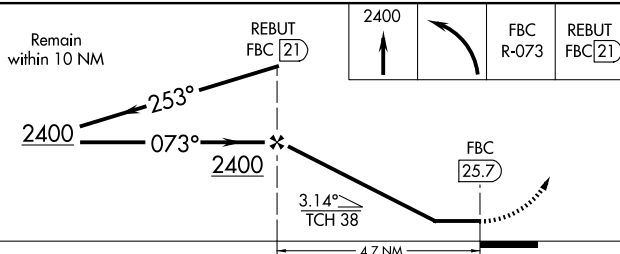
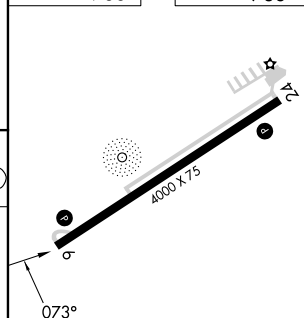
AWOS-3 127.175	FDY ASOS 132.85	TOLEDO APP CON 120.8 317.55	UNICOM 123.0 (CTAF) 0
--------------------------	---------------------------	---------------------------------------	---------------------------------



Procedure NA for arrival on FBC
VORTAC airway radials 081 CW 134.



ELEV	786		TDZE	786
------	-----	--	------	-----



CATEGORY	A	B	C	D
S-6	1400-1 614 (700-1)	1400-1 614 (700-1)	1400-1 ³ / ₄ 614 (700-1 ³ / ₄)	NA
CIRCLING	1400-1 614 (700-1)	1400-1 ¹ / ₄ 614 (700-1 ¹ / ₄)	1400-1 ³ / ₄ 614 (700-1 ³ / ₄)	NA

MIRL Rwy 6-24 **L**
REIL Rwy 6 and 24 **L**

TIFFIN, OHIO
Amdt 9B 19JUL18

41°06'N-83°13'W

SENECA COUNTY (16G)
VOR RWY 6

EC-2, 10 JUL 2025 to 07 AUG 2025

EC-2, 10 JUL 2025 to 07 AUG 2025