

WAAS CH 77713 W06A	APP CRS 061°	Rwy Idg TDZE Apt Elev	4000 786 786
--	------------------------	-----------------------------	---

RNAV (GPS) RWY 6

SENECA COUNTY (16G)

RNP APCH.

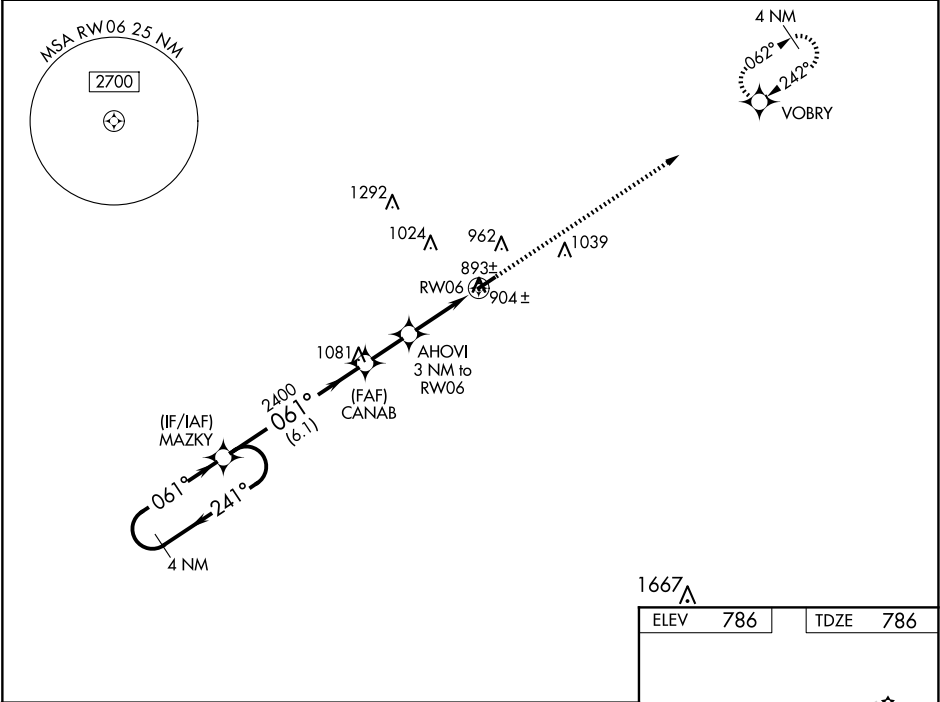
▼

NA

Circling to Rwy 24 NA at night. Baro-VNAV NA when using Findlay altimeter setting. For uncompensated Baro-VNAV systems, LNAV/VNAV NA below -16°C or above 54°C. When local altimeter setting not received, use Findlay altimeter setting and increase all DA/MDA 60 feet, increase LPV all Cats ¼ SM and LNAV and Circling Cat C visibility ¼ SM.

MISSED APPROACH:
Climb to 2400 direct
VOBRY and hold.

AWOS-3 127.175	FDY ASOS 132.85	TOLEDO APP CON 120.8 317.55	UNICOM 123.0 (CTAF)
--------------------------	---------------------------	---------------------------------------	-------------------------------



4 NM Holding Pattern		MAZKY		CANAB		AHOVI 3 NM to RW06		RW06	
2400		←241° 061°→		2400		2400		*1780	
GP 3.00° TCH 38		6.1 NM		1.9 NM		3 NM			
CATEGORY		A		B		C		D	
LPV	DA	1137-1¼		351 (400-1¼)				NA	
LNAV/VNAV	DA	1174-1½		388 (400-1½)				NA	
LNAV	MDA	1160-1		374 (400-1)				NA	
CIRCLING		1280-1		494 (500-1)		1340-1½		554 (600-1½)	
								NA	

ELEV 786

TDZE 786

2400

VOBRY

*LNAV only.

4000 X 75

061°

MIRL Rwy 6-24
REIL Rwy 6 and 24

EC-2, 10 JUL 2025 to 07 AUG 2025

EC-2, 10 JUL 2025 to 07 AUG 2025