

TIFFIN, OHIO

AL-5645 (FAA)

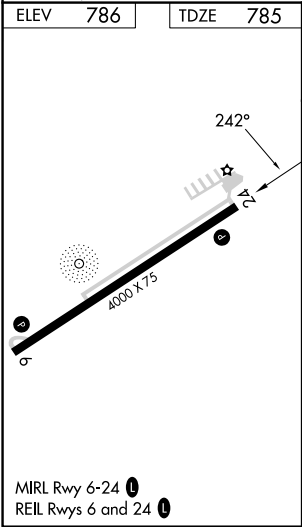
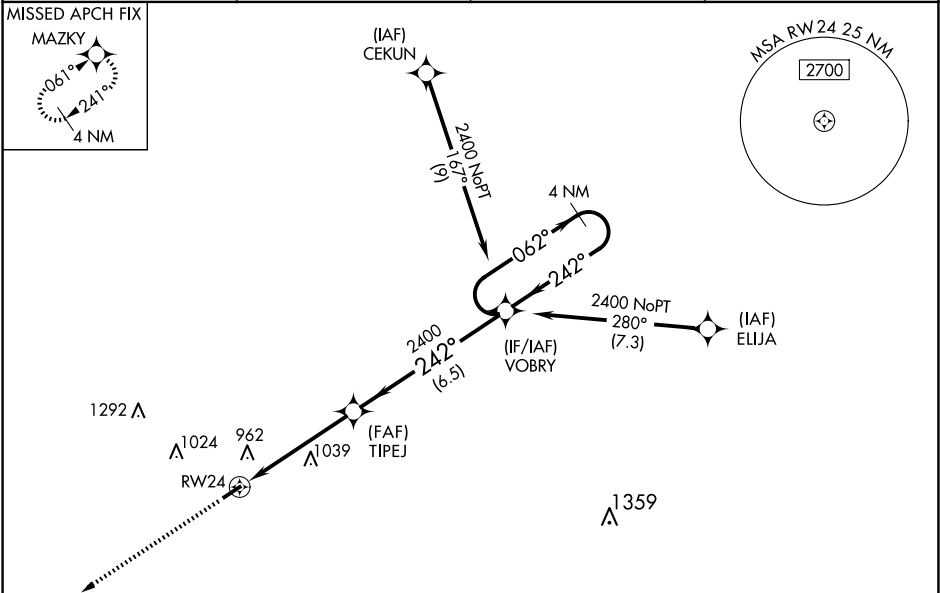
23054

WAAS CH <b>90528</b> <b>W24A</b>	APP CRS <b>242°</b>	Rwy Idg TDZE Apt Elev	<b>4000</b> <b>785</b> <b>786</b>
--	------------------------	-----------------------------	---

RNAV (GPS) RWY 24  
SENECA COUNTY(16G)

RNP APCH. <div><div>▼</div><div>▲ NA</div></div> <div>Circling to Rwy 24 NA at night. Baro-VNAV NA when using Findlay altimeter setting. Rwy 24 helicopter visibility reduction below <math>\frac{3}{4}</math> SM NA. For uncompensated Baro-VNAV systems, LNAV/VNAV NA below -16°C or above 54°C. When local altimeter setting not received, use Findlay altimeter setting and increase all DA/MDA 60 feet, and increase LPV, LNAV/VNAV all Cats visibility <math>\frac{1}{8}</math> SM, increase LNAV and Circling Cat C visibility <math>\frac{1}{4}</math> mile.</div>	MISSED APPROACH: Climb to 2400 direct MAZKY and hold.
---	---

AWOS-3 <b>127.175</b>	FDY ASOS <b>132.85</b>	TOLEDO APP CON <b>120.8 317.55</b>	UNICOM <b>123.0 (CTAF) 0</b>
--------------------------	---------------------------	---------------------------------------	---------------------------------



	2400	MAZKY	TIPEJ	VOBRY	4 NM Holding Pattern
			2400		
		2400			GP 3.00° TCH 38
	4.9 NM		6.5 NM		
CATEGORY	A	B	C	D	
LPV DA		1058-1	273 (300-1)		NA
LNAV/VNAV DA		1063-1	278 (300-1)		NA
LNAV MDA	1280-1	495 (500-1)	1280-1 $\frac{3}{8}$ 495 (500-1 $\frac{3}{8}$ )		NA
CIRCLING	1280-1	494 (500-1)	1340-1 $\frac{1}{2}$ 554 (600-1 $\frac{1}{2}$ )		NA

TIFFIN, OHIO

Amdt 1D 27JAN22

41°06'N-83°13'W

SENECA COUNTY(16G)

RNAV (GPS) RWY 24

EC-2, 10 JUL 2025 to 07 AUG 2025

EC-2, 10 JUL 2025 to 07 AUG 2025