


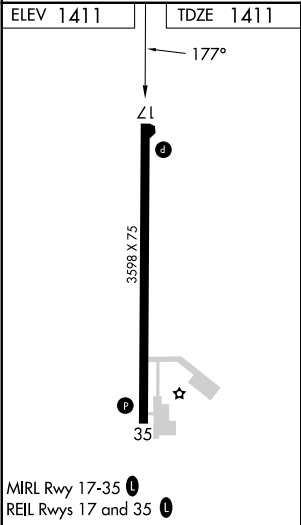
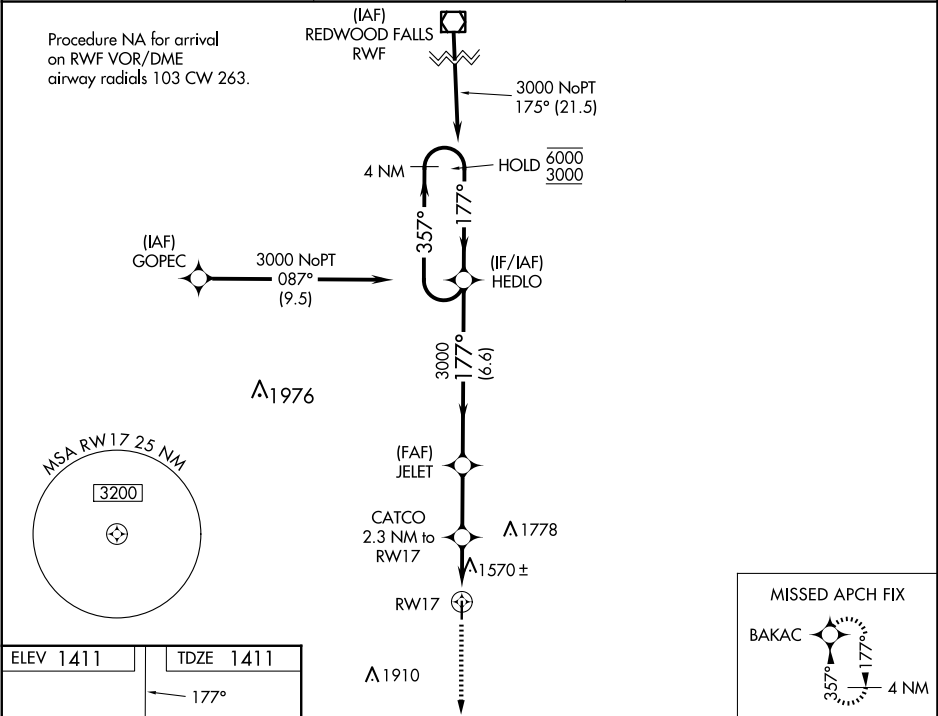
WAAS CH <b>53742</b> <b>W17A</b>	APP CRS <b>177°</b>	Rwy Idg TDZE Apt Elev	<b>3598</b> <b>1411</b> <b>1411</b>
--	------------------------	-----------------------------	---


RNAV (GPS) RWY 17

WINDOM MUNI (MWM)

RNP APCH.	MISSED APPROACH: Climb to 3100 direct BAKAC and hold.
▼ For uncompensated Baro-VNAV systems, LNAV/VNAV NA below -17°C or above 54°C.	

AWOS-3PT <b>119.325</b>	MINNEAPOLIS CENTER <b>127.1 290.2</b>	CTAF <b>122.9</b> 
----------------------------	--	--



3100	BAKAC	VGSi and RNAV glidepath not coincident (VGSi Angle 3.00/TCH 25).			
		HEDLO	4 NM Holding Pattern		
* LNAV only	CATCO 2.3 NM to RW17	JELET 3000	177°	357° → 6000 ← 177° 3000	GP 3.00° TCH 40
	RW17	2180*	3000		
	1.2 NM	1.1 NM	2.6 NM	6.6 NM	
CATEGORY	A	B	C	D	
LPV DA	1661-1	250 (300-1)		NA	
LNAV/VNAV DA	1858-1 <sup>3</sup> / <sub>8</sub>	447 (500-1 <sup>3</sup> / <sub>8</sub> )		NA	
LNAV MDA	1820-1	409 (500-1)	1820-1 <sup>1</sup> / <sub>8</sub> 409 (500-1 <sup>1</sup> / <sub>8</sub> )	NA	
 CIRCLING	1880-1 469 (500-1)	1900-1 489 (500-1)	1920-1 <sup>1</sup> / <sub>2</sub> 509 (600-1 <sup>1</sup> / <sub>2</sub> )	NA	

NC-1, 10 JUL 2025 to 07 AUG 2025

NC-1, 10 JUL 2025 to 07 AUG 2025