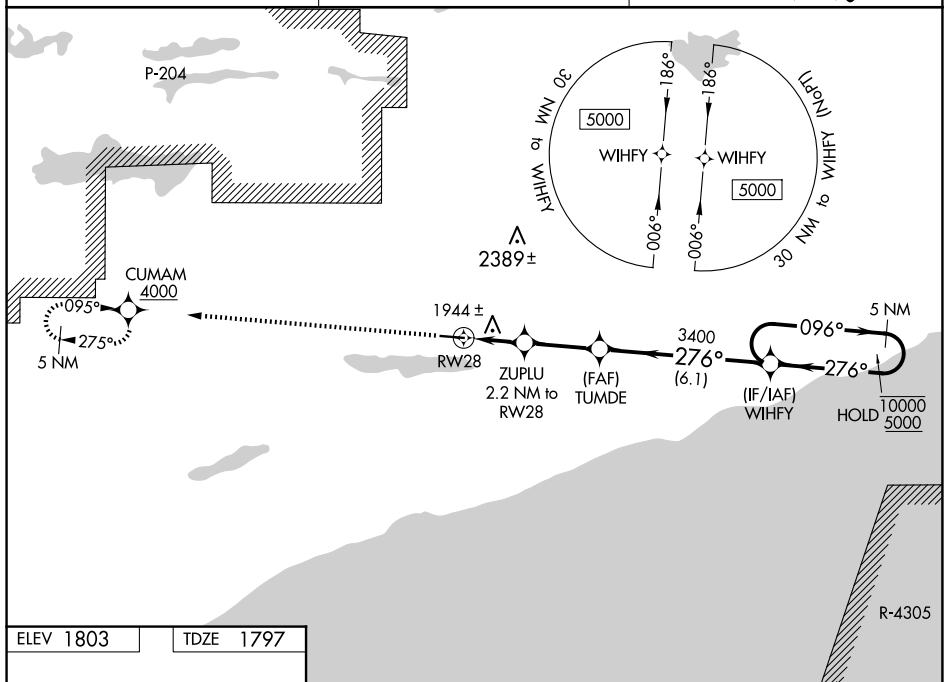



RNAV (GPS) RWY 28

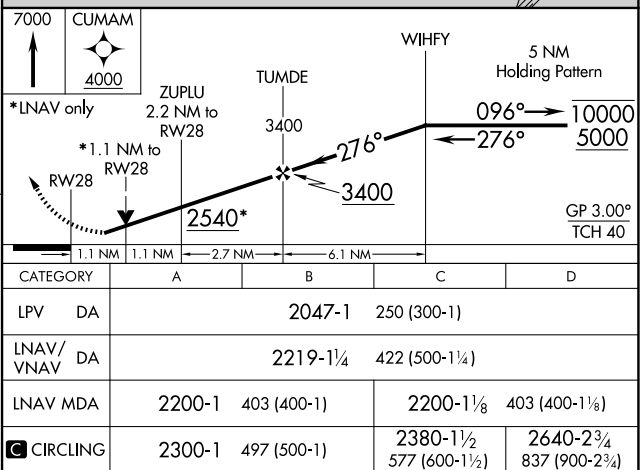
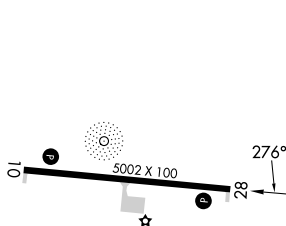
GRAND MARAIS/COOK COUNTY (CKC)

⚠ Circling Rwy 10 NA at night. Rwy 28 helicopter visibility reduction below $\frac{3}{4}$ SM NA. For uncompensated Baro-VNAV systems, LNAV/VNAV NA below -18°C or above 54°C.

MISSED APPROACH: Climb to 7000 direct CUMAM, cross CUMAM at or above 4000 and hold, continue climb-in-hold to 7000.

UNICOM
122.8 (CTAF) 

TDZE 1797



GRAND MARAIS/COOK COUNTY (CKC)
RNAV (GPS) RWY 28