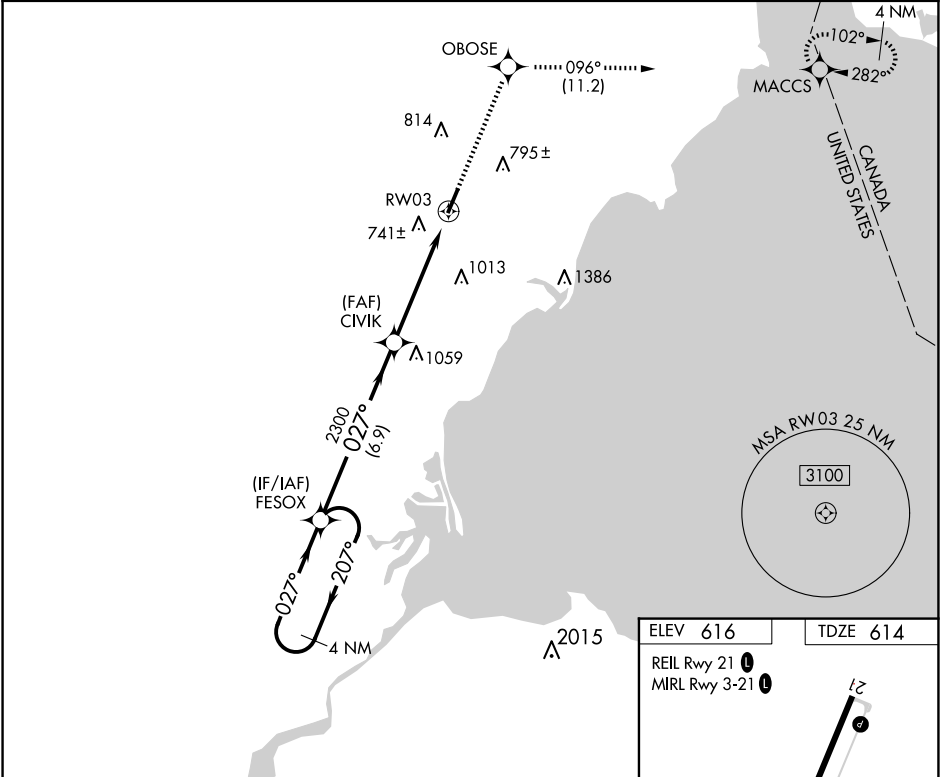


APP CRS	Rwy Ldg	4997
027°	TDZE	614
	Apt Elev	616

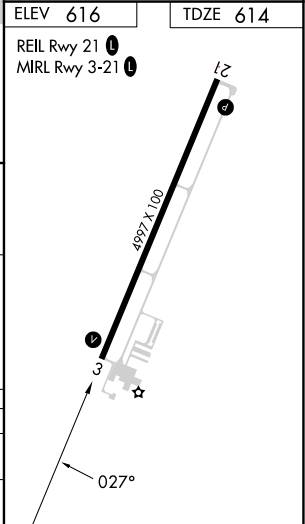
RNAV (GPS) RWY 3  
CUSTER (TTF)

RNP APCH - GPS.	MISSED APPROACH: Climb to 3000 direct OBOSE and on track 096° to MACCS and hold.
When local altimeter setting not received, use Detroit Metro Wayne County altimeter setting and increase all MDAs 60 feet and LNAV visibility Cat C/D ¼ SM, and Circling visibility Cat C/D ¼ SM. Rwy 3 helicopter visibility reduction below 1 SM NA. Procedure NA at night.	

AWOS-3 119.075	DETROIT APP CON 134.3 363.2	UNICOM 122.7 (CTAF) 0
-------------------	--------------------------------	--------------------------



4 NM Holding Pattern	FESOX	3000	OBOSE	MACCS
3000	207°	027°	tr 096°	
VGSIs and descent angles not coincident (VGSIs Angle 4.00/TCH 58).				
6.9 NM		5.1 NM	RWY 3	
CATEGORY	A	B	C	D
LNAV MDA	1100-1	486 (500-1)	1100-1¼ 486 (500-1¼)	1100-1½ 486 (500-1½)
CIRCLING	1120-1 504 (600-1)	1180-1 564 (600-1)	1380-2¼ 764 (800-2¼)	1380-2½ 764 (800-2½)



EC-1, 10 JUL 2025 to 07 AUG 2025

EC-1, 10 JUL 2025 to 07 AUG 2025