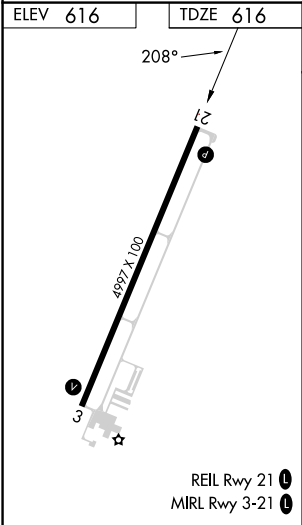
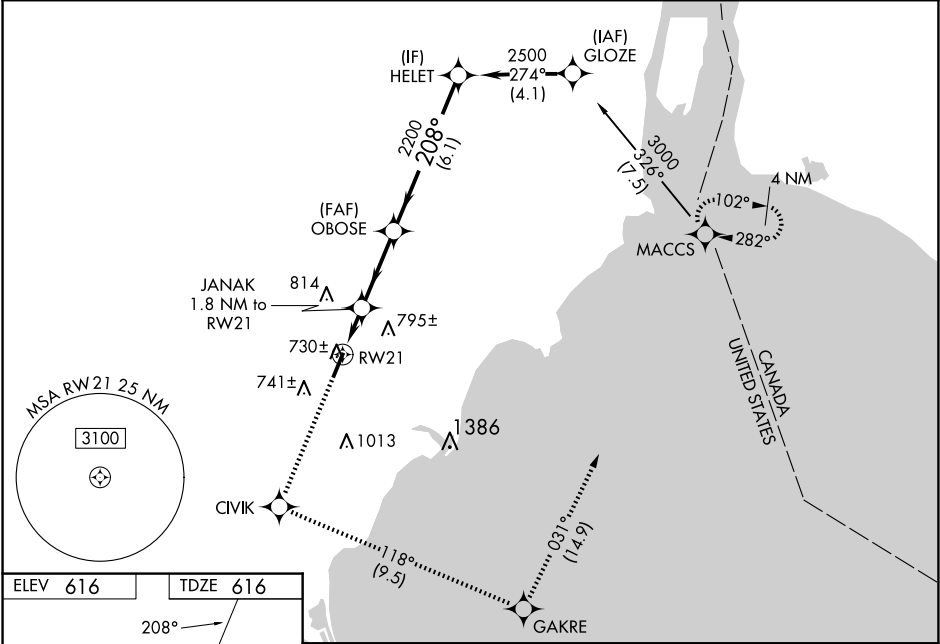


WAAS CH 86707 W21A	APP CRS 208°	Rwy Ldg TDZE 616 Apt Elev 616
--	------------------------	---

RNAV (GPS) RWY 21

CUSTER (TTF)

RNP APCH - GPS.		MISSED APPROACH: Climb to 3000 direct CIVIK and on track 118° to GAKRE and on track 031° to MACCS and hold.
AWOS-3 119.075	DETROIT APP CON 134.3 363.2	UNICOM 122.7 (CTAF) 0



3000	CIVIK	GAKRE	MACCS	VGSI and RNAV glidepath not coincident (VGSI Angle 3.50/TCH 49).	
	↑	tr 118°	tr 031°	OBOSE	HELET
* LNAV only.		JANAK 1.8 NM to RW21	2200		
RW21		* 0.9 NM to RW21	2200		
0.9 NM		0.9 NM	3 NM	6.1 NM	GP 3.00° TCH 42
CATEGORY	A	B	C	D	
LPV DA	966-1¼ 350 (400-1¼)				
LNAV/VNAV DA	1009-1½ 393 (400-1½)				
LNAV MDA	980-1 364 (400-1)				980-1¼ 364 (400-1¼)
CIRCLING	1120-1 504 (600-1)	1180-1 564 (600-1)	1380-2¼ 764 (800-2¼)	1380-2½ 764 (800-2½)	