

DETROIT DEP CON  
134.3 284.0  
AWOS-3  
119.075  
CTAF  
122.7

RNAV-1 DME/DME/IRU or GPS.  
RADAR required.

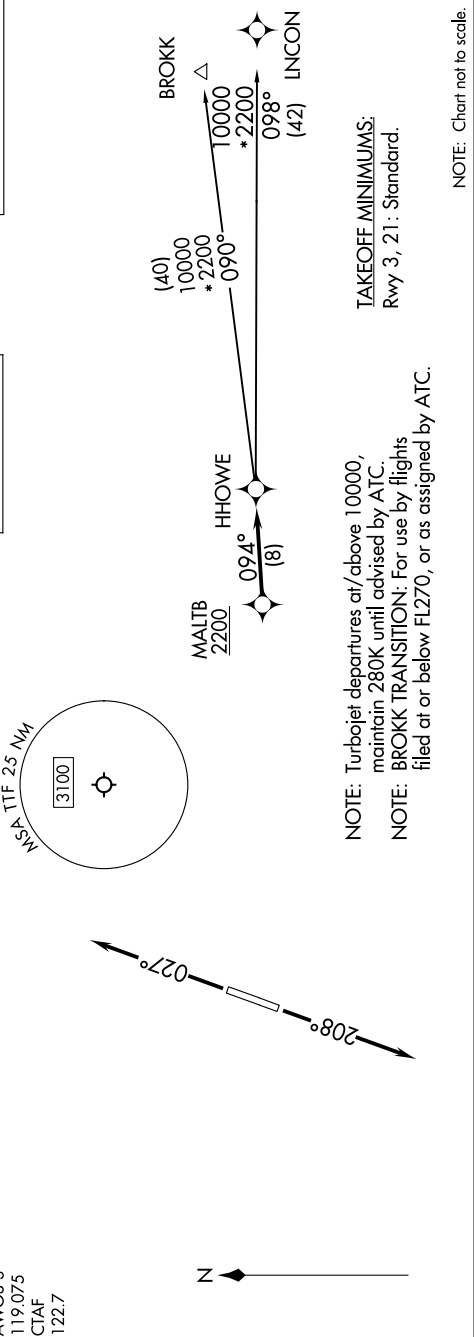
TOP ALTITUDE:  
ASSIGNED BY ATC

HHOWE FOUR DEPARTURE (RNAV) AL-5642 (FAA)

CUSTER (TTF)  
MONROE, MICHIGAN

HHOWE FOUR DEPARTURE (RNAV)  
(HHOWE4.HHOWE) 16MAY24

MONROE, MICHIGAN  
CUSTER (TTF)



DEPARTURE ROUTE DESCRIPTION

TAKEOFF RUNWAY 3: Climb on heading 027° or as assigned by ATC, thence....  
TAKEOFF RUNWAY 21: Climb on heading 208° or as assigned by ATC, thence....  
....for RADAR vectors to cross MALT B at or above 2200, then on track 094° to HHOWE, then on (transition).  
Maintain ATC assigned altitude, expect filed altitude 10 minutes after departure.  
BROKK TRANSITION (HHOWE4.BROKK):  
LINCON TRANSITION (HHOWE4.LINCON):