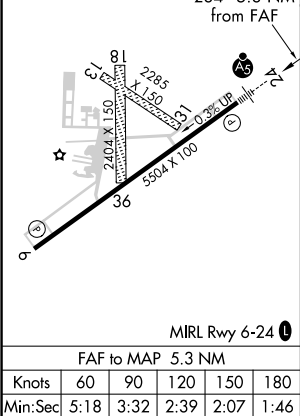
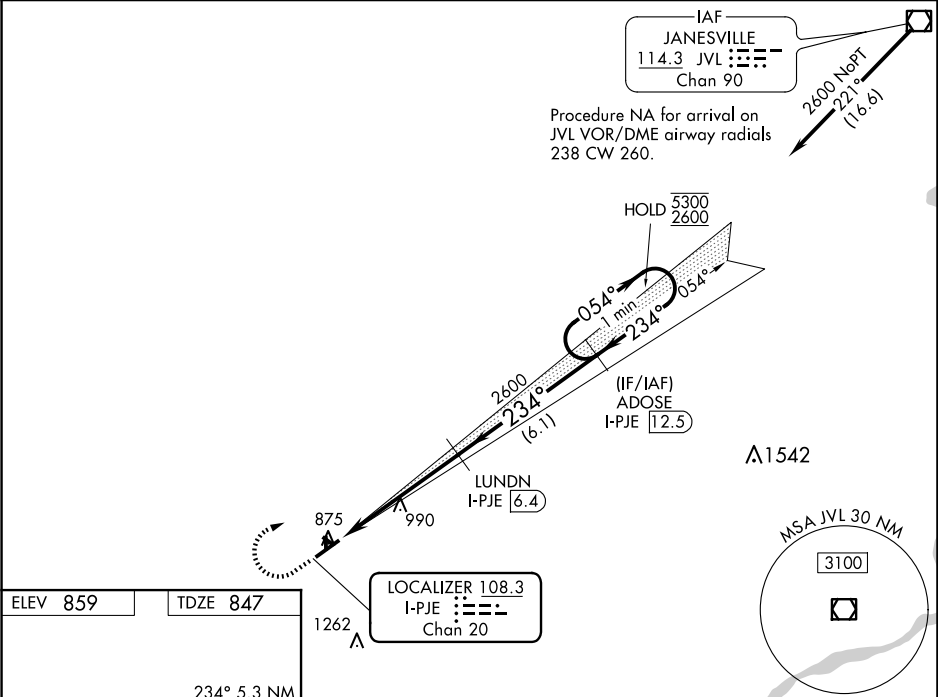


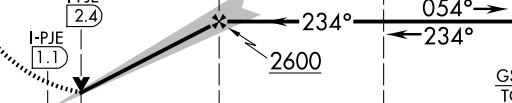
LOC/DME I-PJE 108.3 Chan 20	APP CRS 234°	Rwy Idg TDZE Apt Elev	5504 847 859
---	------------------------	-----------------------------	---

ILS or LOC RWY 24

ALBERTUS(FEP)

DME required.		<div>MALSR</div> <div></div>	MISSED APPROACH: Climb to 1400 then climbing right turn to 2600 on JVL VOR/ DME R-221 to ADOSE/ I-PJE 12.5 DME and hold.
<div><div><div>V</div><div>Δ</div></div>NA</div> <div>VDP NA when using Chicago/Rockford altimeter setting. Circling NA to Rwy's 13, 18, 31, 36. For inop ALS when using Chicago/Rockford altimeter setting, increase S-ILS 24 all Cats visibility to ¾ SM. When local altimeter setting not received, use Chicago/Rockford altimeter setting: increase all DA to 1114 feet; increase all MDA 80 feet and S-LOC 24 Cat C/D visibility ¼ SM and Circling Cat C/D ¼ SM.</div>			
AWOS-3 120.525	ROCKFORD APP CON 126.0 327.0	CINC DEL 121.85	UNICOM 122.8 (CTAF) 0



1400 ↑	2600 JVL R-221	ADOSE I-PJE 12.5	One Minute Holding Pattern			
			LUNDN I-PJE 6.4	ADOSE I-PJE 12.5		
						
CATEGORY	A	B	C	D		
S-ILS 24	1047-½ 200 (200-½)					
S-LOC 24	1300-½	453 (500-½)	1300-⅞	453 (500-⅞)		
CIRCLING	1320-1 461 (500-1)	1400-1 541 (600-1)	1440-1½ 581 (600-1½)	1620-2½ 761 (800-2½)		