



VOR/DME MML <u>111.0</u> Chan 47	APP CRS 130°	Rwy Idg 7221 TDZE 1183 Apt Elev 1183
---	------------------------	---

VOR RWY 12
SOUTHWEST MINNESOTA RGNL MARSHALL/RYAN FLD (MML)

	<p>For inop ALS, increase S-12 Cat C/D visibilities to 1% SM, CEGUL fix minimums: S-12 Cat C/D visibility to 1 SM. For inop ALS when using Tracy altimeter setting increase S-12 Cat C/D visibilities to 1% SM.</p>
	<p>When local altimeter setting not received, use Tracy Muni altimeter setting and increase all MDAs 60 feet, S-12 Cat C/D visibility $\frac{1}{8}$; Circling Cat C/D visibility $\frac{1}{4}$ SM; CEGUL fix minimums: increase Circling C/D visibility $\frac{1}{4}$ SM. VDP NA when using Tracy Muni altimeter setting.</p>

MALSR

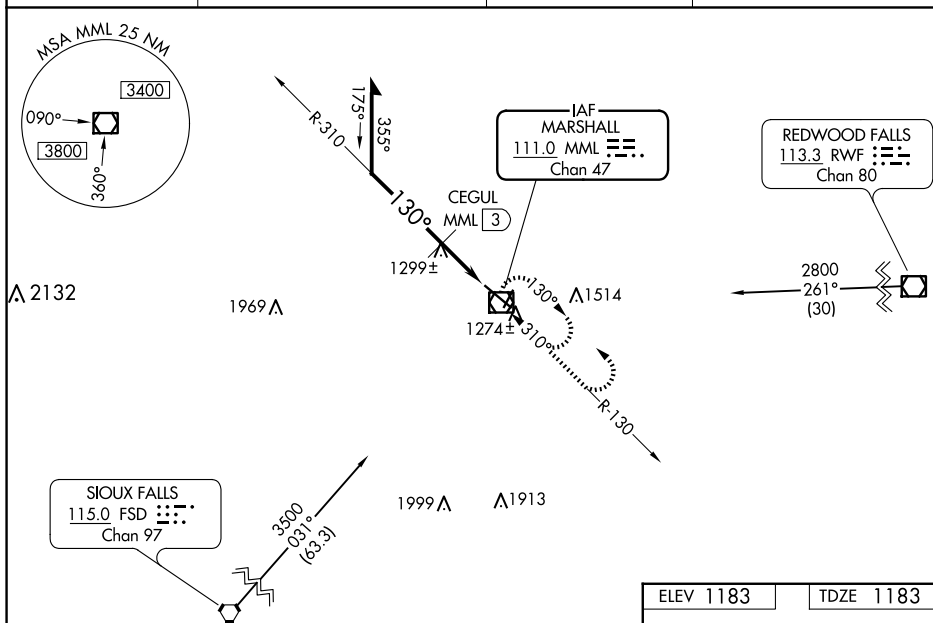


MISSED APPROACH: Climb to 2000, then climbing left turn to 2800 direct MML VOR/DME and hold.

AWOS-3PT
120.150

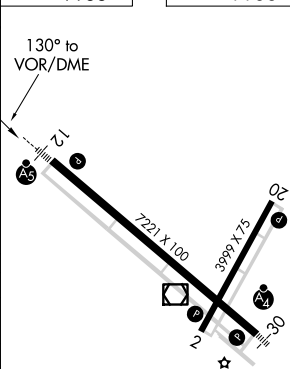
MINNEAPOLIS CENTER
127.1 290.2

GCO
121.725

UNICOM
122.8 (CTAF) **L**

2000	2800	MML

ELEV 1183		TDZE 1183
-----------	--	-----------



CATEGORY	A	B	C	D
S-12	1760-½	577 (600-½)	1760-1¼	577 (600-1¼)
CIRCLING	1760-1	577 (600-1)	1820-1¾ 637 (700-1¾)	1840-2 657 (700-2)
CEGUL FIX MINIMUMS				
S-12	1560-½	377 (400-½)	1560-¾	377 (400-¾)
CIRCLING	1640-1	457 (500-1)	1820-1¾ 637 (700-1¾)	1840-2 657 (700-2)

HIRL Rwy 12-30 **L**
REIL Rwys 2 and 20 **L**
MIRL Rwy 2-20 **L**