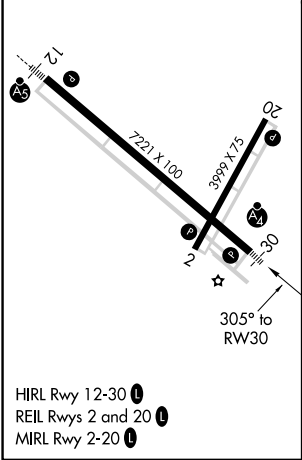
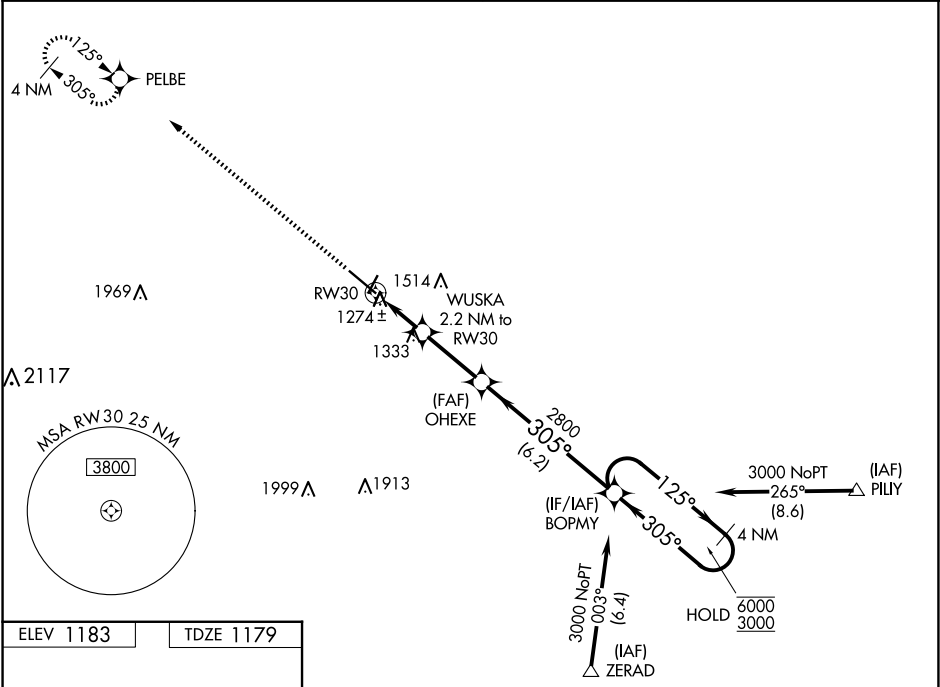


WAAS CH 86321 W30A	APP CRS 305°	Rwy Idg TDZE Apt Elev	7221 1179 1183
--	------------------------	-----------------------------	---

RNAV (GPS) RWY 30

SOUTHWEST MINNESOTA RGNL MARSHALL/RYAN FLD (MML)

RNP APCH - GPS		MALSF	MISSED APPROACH: Climb to 3200 direct PELBE and hold.
AWOS-3PT 120.150		MINNEAPOLIS CENTER 127.1 290.2	UNICOM 122.8 (CTAF) 0



3200	PELBE	VGSI and RNAV glidepath not coincident (VGSI Angle 3.00/TCH 32).			
		WUSKA 2.2 NM to RW30	OHEXE	BOPMY	4 NM Holding Pattern
		1.2 NM to RW30	2800	125°	6000
			1900	305°	3000
		1.2 NM	1 NM	2.8 NM	6.2 NM
CATEGORY	A	B	C	D	
LPV DA	1429-¾ 250 (300-¾)				
LNAV/VNAV DA	1464-¾ 285 (300-¾)				
LNAV MDA	1600-¾	421 (500-¾)	1600-1	421 (500-1)	
CIRCLING	1640-1	457 (500-1)	1820-1¾ 637 (700-1¾)	1840-2 657 (700-2)	

NC-1, 10 JUL 2025 to 07 AUG 2025

NC-1, 10 JUL 2025 to 07 AUG 2025