

EL MONTE, CALIFORNIA

AL-5639 (FAA)

25051

VORTAC POM 110.4 Chan 41	APP CRS 258°	Rwy Idg N/A TDZE N/A Apt Elev 296
--	------------------------	--

APP CRS
258°

Rwy Idg	N/A
TDZE	N/A
Apt Elev	296

VOR-A
SAN GABRIEL VALLEY (EMT)

<p>V Circling Rwy 1 NA at night. When local altimeter setting not received, use Ontario Intl altimeter setting and increase all</p> <p>A MDA 160 feet.</p>	<p>MISSED APPROACH: Climbing left turn to 2500 on heading 070° and PDZ VORTAC R-278 to ADAMM INT./PDZ 15.5 DME then continue climb to 4000 to PDZ VORTAC.</p>
--	--

MISSED APPROACH: Climbing left turn to 2500 on heading 070° and PDZ VORTAC R-278 to ADAMM INT/PDZ 15.5 DME then continue climb to 4000 to PDZ VORTAC.

ATIS 118.75	SOCAL APP CON 125.5 349.0	EL MONTE TOWER ★ 121.2 (CTAF) 0	GND CON 125.9	UNICOM 122.95
----------------	------------------------------	------------------------------------	------------------	------------------

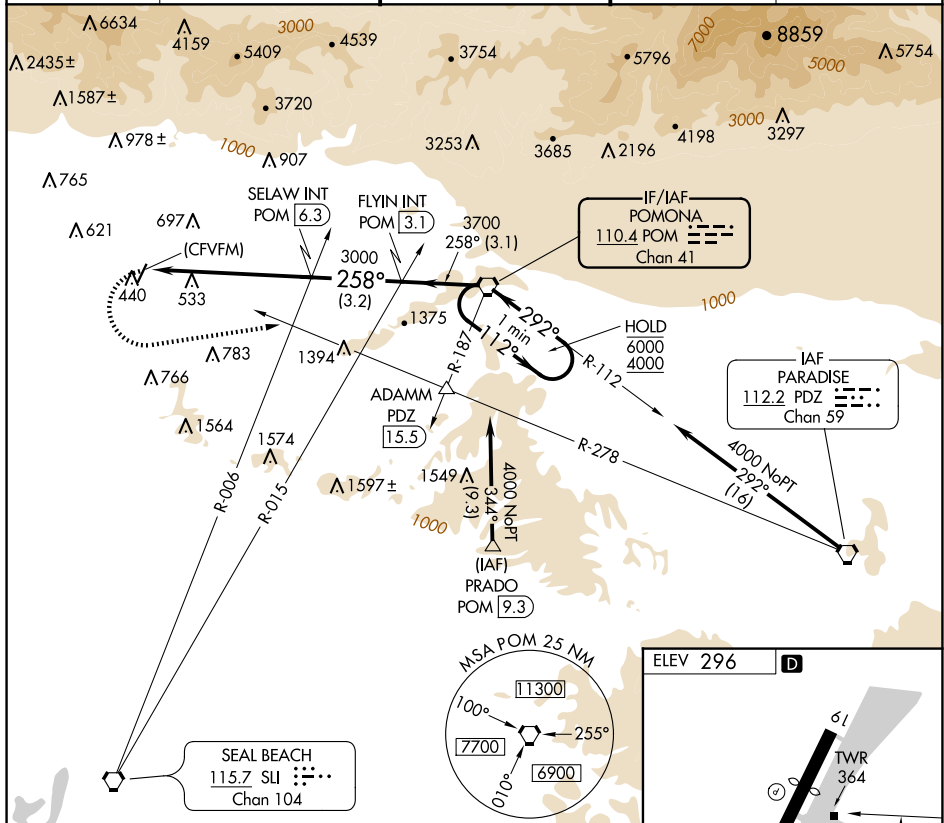


Diagram illustrating a Circling Approach Chart. The chart shows a circling approach for a runway with a 2500-foot width. The approach is a 112°/292° pattern. The chart includes a diagram of the approach, a table of approach data, and a diagram of the runway layout.

CATEGORY	A	B	C	D
C CIRCLING	1280-1¼ 984 (1000-1¼)	1280-1½ 984 (1000-1½)	1280-3 984 (1000-3)	1320-3 1024 (1100-3)

FAF to MAP 5.9 NM

Knots	60	90	120	150	180
Min:Sec	5:54	3:56	2:57	2:22	1:58

EL MONTE, CALIFORNIA
Orig-A 28MAR19

34°05'N-118°02'W

SAN GABRIEL VALLEY (EMT)
VOR-A

SW-3, 10 JUL 2025 to 07 AUG 2025