

APP CRS
096°

Rwy Idg
TDZE
Apt Elev
N/A
N/A
296

RNP APCH+GPS.

▼

▲

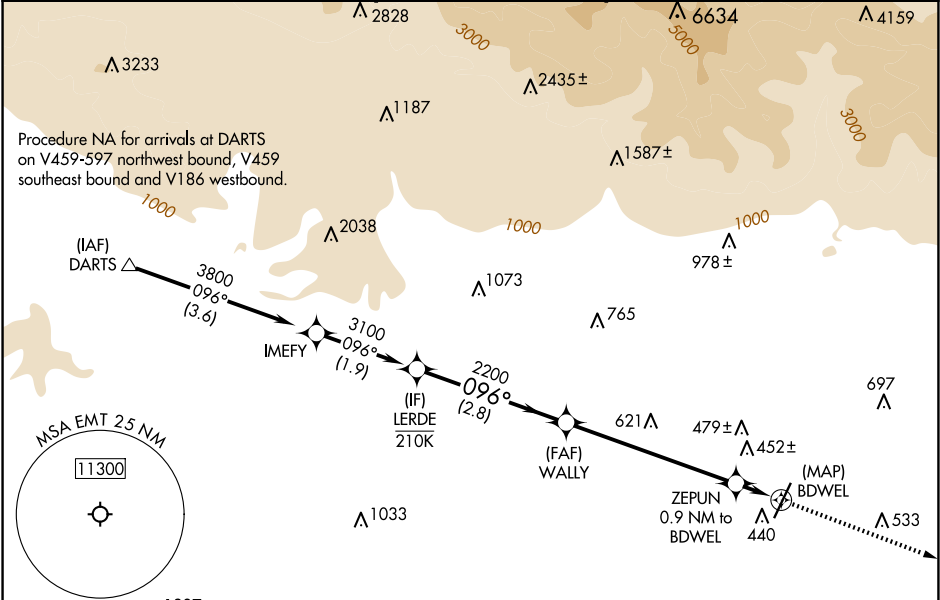
Circling Rwy 1 NA at night. Rwy 1, 19 helicopter visibility reduction below 1 SM NA.

MISSED APPROACH: Climb to 4000 direct ADAMM and on track 098° to PDZ VORTAC and hold.

RNAV (GPS)-B

SAN GABRIEL VALLEY (EMT)

ATIS 118.75	SOCAL APP CON 125.5 349.0	EL MONTE TOWER * 121.2 (CTAF) 0	GND CON 125.9	UNICOM 122.95
-----------------------	-------------------------------------	--	-------------------------	-------------------------



ELEV 296 **D**

MISSED APCH FIX

ADAMM

PARADISE PDZ

(not to scale)

LERDE

WALLY

ZEPUN

BDWEL

4000

ADAMM

tr 098°

PDZ

3100

2200

1120

2.8 NM

3.2 NM

0.9

CATEGORY	A	B	C	D
CIRCLING	820-1 524 (600-1)	960-1 664 (700-1)	1140-2½ 844 (900-2½)	1300-3 1004 (1100-3)

EL MONTE, CALIFORNIA

Orig-A 02DEC21

34°05'N-118°02'W

SAN GABRIEL VALLEY (EMT)

RNAV (GPS)-B