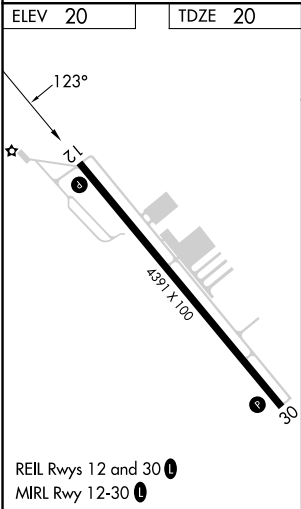
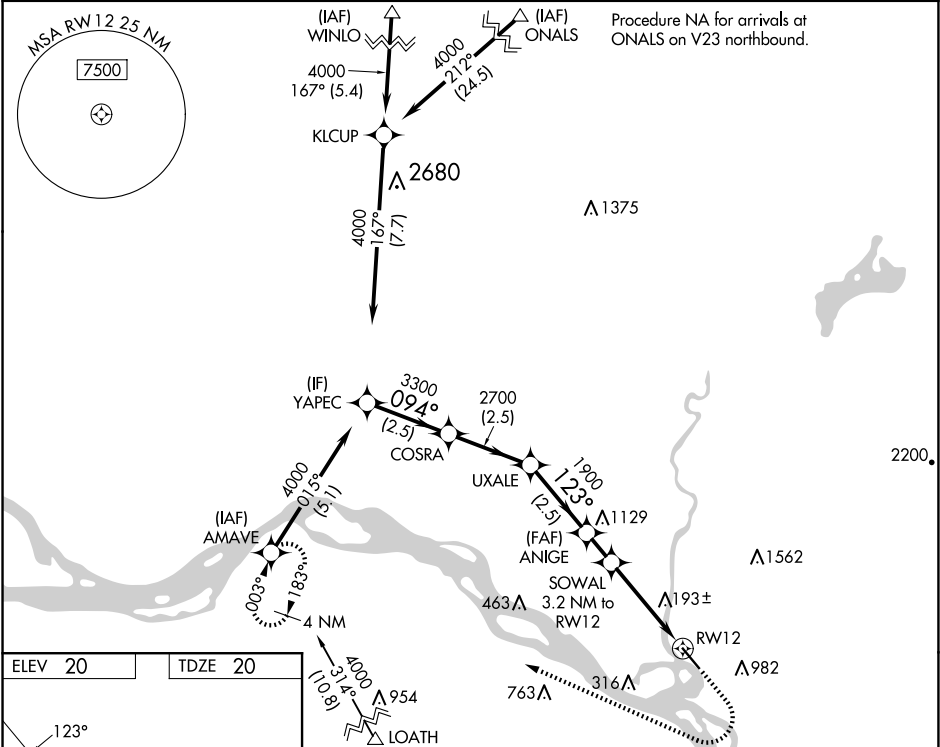


WAAS CH 65743 W12A	APP CRS 123°	Rwy Idg TDZE Apt Elev	4391 20 20
--	------------------------	-----------------------------	---------------------------------------

RNAV (GPS) RWY 12

SOUTHWEST WASHINGTON RGNL (KLS)

RNP APCH. ⚠ Circling NA northeast of Rwy 12-30. Circling Rwy 30 NA at night. Rwy 12 helicopter visibility reduction below ¾ SM NA. For uncompensated Baro-VNAV systems, LNAV/VNAV NA below -6°C or above 54°C.		MISSED APPROACH: Climb to 800 then climbing right turn to 4000 direct AMAVE and hold, continue climb-in-hold to 4000.
AWOS-3PT 135.075	SEATTLE CENTER 124.2 317.6	UNICOM 122.725 (CTAF) 0



VGSi and RNAV glidepath not coincident (VGSi Angle 4.00/TCH 65).				800	4000	AMAVE
YAPEC 4000 094° 3300 GP 4.00° TCH 50				*LNAV only		
COSRA 2700 123° 1900 *1420				*2.1 NM to RW12		
UXALE 1900 123° 1420				RW12		
ANIGE 1900 123° 1420				RW12		
SOWAL 463 3.2 NM to RW12				RW12		
RW12 193±				RW12		
AMAVE 4000				RW12		
LOATH 954				RW12		
CATEGORY				RW12		
LPV DA				RW12		
LNAV/VNAV DA				RW12		
LNAV MDA				RW12		
CIRCLING				RW12		