

25163

RNAV (GPS) RWY 33  
BRIDGEWATER AIR PARK (VBW)

**T** Procedure NA at night.  
**A** Rwy 33 helicopter visibility reduction below 1 SM NA.

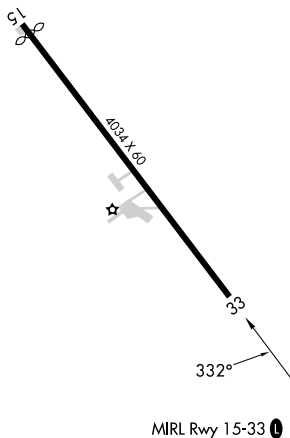
**MISSED APPROACH:** Climbing left turn to 6000 direct MOL VOR/DME and hold.

AWOS-3 <b>119.55</b>	POTOMAC APP CON <b>132.85 323.125</b>	UNICOM <b>122.7 (CTAF) 0</b>
-------------------------	--	---------------------------------

[illegible]

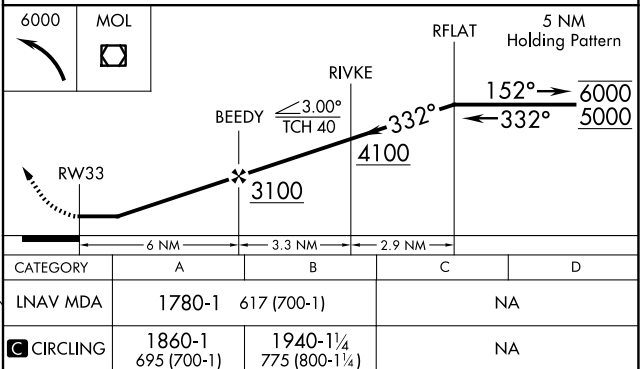
MISSED APCH FIX  
5 NM  
275°  
095°  
MONTEBELLO  
MOI

ELEV	1165		TDZE	1163
------	------	--	------	------



MONTEBELLO  
MOL

Procedure NA for arrival on MOL VOR/DME  
airway radials 009 CW 115.



38°22'N-78°58'W

BRIDGEWATER AIR PARK (VBW)

RNAV (GPS) RWY 33

NE-3, 10 JUL 2025 to 07 AUG 2025