

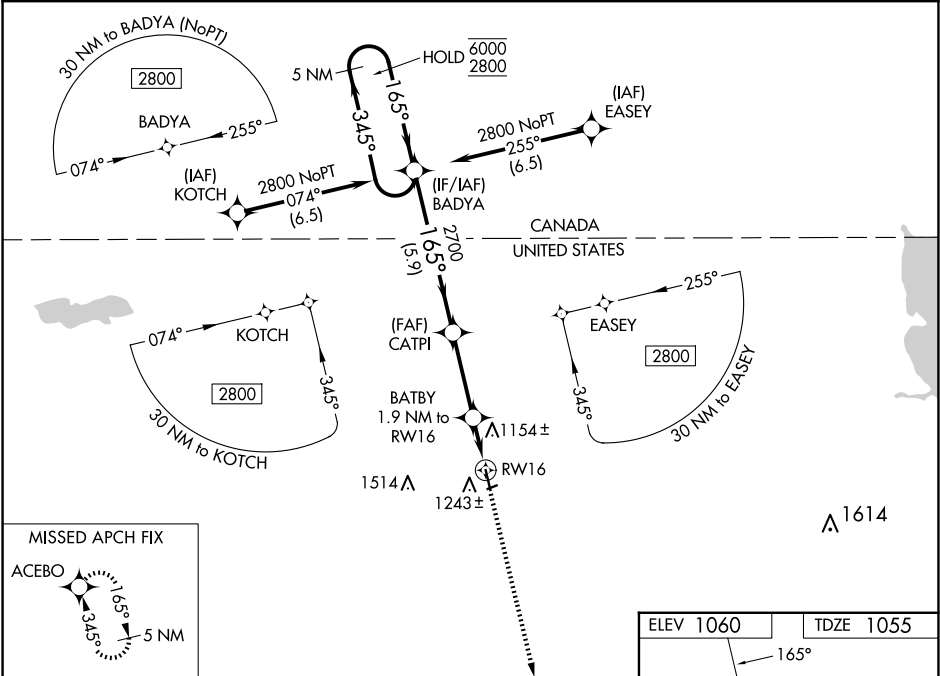
WAAS CH <b>56304</b> <b>W16A</b>	APP CRS <b>165°</b>	Rwy Idg TDZE Apt Elev	<b>4400</b> <b>1055</b> <b>1060</b>
--	------------------------	-----------------------------	---

RNAV (GPS) RWY 16

ROSEAU MUNI/RUDY BILLBERG FLD (ROX)

RNP APCH - GPS. ⚠ Circling NA to Rwy's 6 and 24. For uncompensated Baro-VNAV systems, LNAV/VNAV NA below -17°C or above 54°C. For inop ALS, increase LNAV/VNAV visibility to 7/8 SM. Inop table does not apply to LPV all Cats.	MALSF 	MISSED APPROACH: Climb to 2800 direct ACEBO and hold.
--	-----------	--

AWOS-3 <b>118.075</b>	MINNEAPOLIS CENTER <b>134.75 251.1</b>	UNICOM <b>122.8</b> (CTAF)
--------------------------	---	-------------------------------



5 NM Holding Pattern		BADYA	CATPI	BATBY 1.9 NM to RW16	2800	ACEBO
6000 ← 345°		2800 → 165°	2700	1700	1 NM to RW16	
GP 3.00°			5.9 NM	3.1 NM	0.9 NM	1 NM
TCH 44						
CATEGORY	A	B	C	D		
LPV DA		1255-3/4	200 (200-3/4)			
LNAV/VNAV DA		1330-3/4	275 (300-3/4)			
LNAV MDA		1420-3/4	365 (400-3/4)			
CIRCLING	1600-1	540 (600-1)	1840-2 1/4 780 (800-2 1/4)	1840-2 1/2 780 (800-2 1/2)		

