

WAAS CH <b>86704</b> <b>W32A</b>	APP CRS <b>318°</b>	Rwy Idg TDZE <b>1372</b> Apt Elev <b>1396</b>
--	------------------------	---

RNAV (GPS) RWY 32

DETROIT LAKES/WETHING FLD (DTL)

RNP APCH-GPS.

⚠

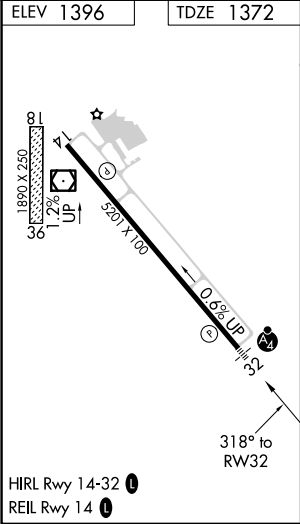
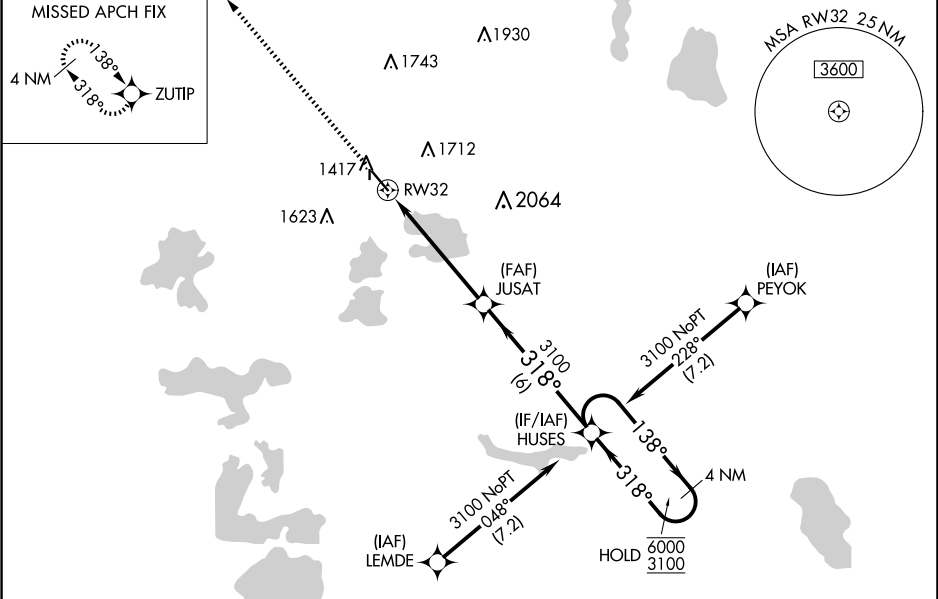
⚠

Circling NA to Rwy 18 and 36. Inop table does not apply to LPV.  
For uncompensated Baro-VNAV systems, LNAV/VNAV NA below -17°C or above 54°C. For inop ALS, increase LNAV/VNAV all Cats visibility to ½ SM.

MALSF

MISSED APPROACH: Climb to 3100 direct ZUTIP and hold.

AWOS-3PT <b>119.075</b>	MINNEAPOLIS CENTER <b>126.1 269.2</b>	UNICOM <b>122.8 (CTAF)</b>
----------------------------	--	-------------------------------



3100	ZUTIP	JUSAT	HUSES	4 NM Holding Pattern
3100	1.4 NM to RW32	3100	318°	138°
			3100	6000
				3100
				GP 3.00°
				TCH 42
CATEGORY	A	B	C	D
LPV DA	1622-¾ 250 (300-¾)			
LNAV/VNAV DA	1656-¾ 284 (300-¾)			
LNAV MDA	1860-¾ 488 (500-¾)	1860-1⅛ 488 (500-1⅛)		
CIRCLING	1860-1 464 (500-1)	2080-2 684 (700-2)	2140-2½ 744 (800-2½)	