

WAAS CH 82643 W14A	APP CRS 138°	Rwy Idg TDZE Apt Elev	5201 1393 1396
--	------------------------	-----------------------------	---

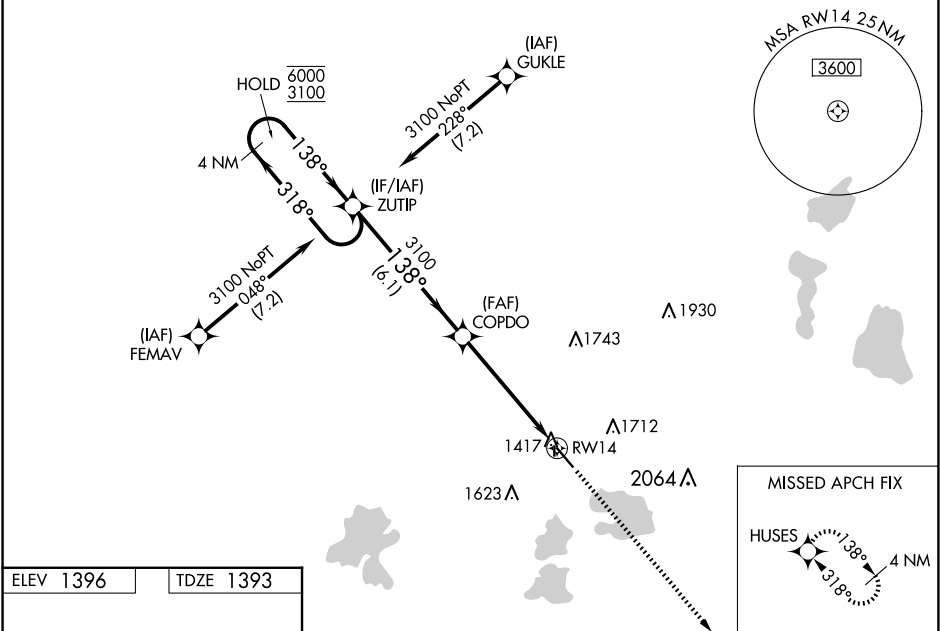
RNAV (GPS) RWY 14
DETROIT LAKES/WETHING FLD (DTL)

RNP APCH.

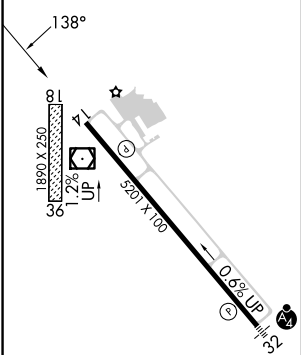
⚠ Circling NA to Rwy 18 and 36. Baro-VNAV and VDP NA when using Park Rapids altimeter setting. For uncompensated Baro-VNAV systems, LNAV/VNAV NA below -17°C or above 54°C. When local altimeter setting not received, use Park Rapids altimeter setting: increase DA to 1728 feet and all visibilities ¼ SM, increase all MDA 100 feet and visibility Cats C and D ¼ SM.

MISSED APPROACH: Climb to 3100 direct HUSES and hold.

AWOS-3PT 119.075	MINNEAPOLIS CENTER 126.1 269.2	UNICOM 122.8 (CTAF) 0
----------------------------	--	---------------------------------



ELEV 1396	TDZE 1393
-----------	-----------



4 NM Holding Pattern		ZUTIP	COPDO	3100	HUSES
6000 ← 318°		3100 → 138°	3100	*LNAV only	
GP 3.00°		6.1 NM		*1.1 NM to RWY 14	
TCH 43		4.1 NM		RWY 14	
CATEGORY	A	B	C	D	
LPV DA	1643-1		250 (300-1)		
LNAV/VNAV DA	1643-1		250 (300-1)		
LNAV MDA	1780-1		387 (400-1)	1780-1½ 387 (400-1½)	
CIRCLING	1820-1 424 (500-1)	1860-1 464 (500-1)	2080-2 684 (700-2)	2140-2½ 744 (800-2½)	

HIRL Rwy 14-32 0
REIL Rwy 14 0

NC-1, 10 JUL 2025 to 07 AUG 2025

NC-1, 10 JUL 2025 to 07 AUG 2025