

PORTLAND, INDIANA

AL-5633 (FAA)

24025

WAAS CH <b>73025</b> <b>W27A</b>	APP CRS <b>272°</b>	Rwy Idg <b>5505</b> TDZE <b>925</b> Apt Elev <b>925</b>
--	------------------------	---

RNAV (GPS) RWY 27  
PORTLAND MUNI (PLD)

RNP APCH - GPS.

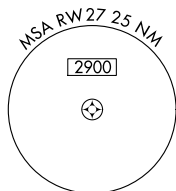


Rwy 27 helicopter visibility reduction below 1 SM NA.  
Straight-in Rwy 27 NA at night, Circling Rwy 27 NA at night.

**MISSED APPROACH:** Climb to 2500 direct DLYEC and hold.

AWOS-3  
124.675

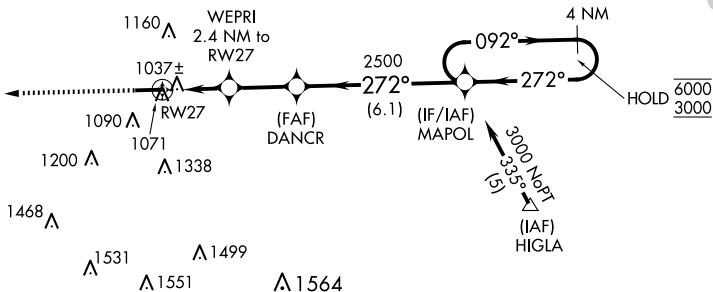
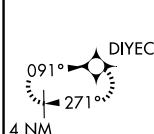
FORT WAYNE APP CON  
**132.15 (SE/NE) 284.6**  
**127.2 (SW/NW) 284.6**

UNICOM  
122.8 (CTAF) **L**

Procedure NA for arrivals at NADIR  
on V14 northeast bound and  
V277 southwest bound.

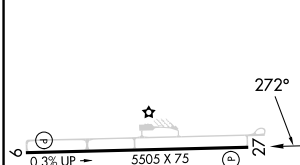
(IAF)  
NADIR



3000 NoPT  
226°  
(12.2)



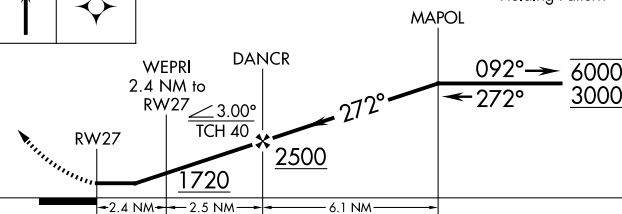
Procedure NA for arrivals at HIGLA  
on V55 southeast bound.

ELEV 925		TDZE 925
----------	--	----------



2500	DIYEC
	

VGSI and descent angles not coincident  
(VGSI Angle 3.00/TCH 26).

4 NM  
Holding Pattern

CATEGORY	A	B	C	D
LP MDA	1300-1 375 (400-1)			
LNAV MDA	1380-1 455 (500-1)		1380-1 $\frac{3}{8}$ 455 (500-1 $\frac{3}{8}$ )	
CIRCLING	1480-1 555 (600-1)		1580-1 $\frac{3}{4}$ 655 (700-1 $\frac{3}{4}$ )	1640-2 $\frac{1}{4}$ 715 (800-2 $\frac{1}{4}$ )

MIRL Rwy 9-27 **L**  
REIL Rwy 9 and 27 **L**

PORTLAND, INDIANA  
Amdt 2A 25JAN24

40°27'N-85°00'W

PORTLAND MUNI (PLD)  
RNAV (GPS) RWY 27

EC-2, 10 JUL 2025 to 07 AUG 2025

EC-2, 10 JUL 2025 to 07 AUG 2025