

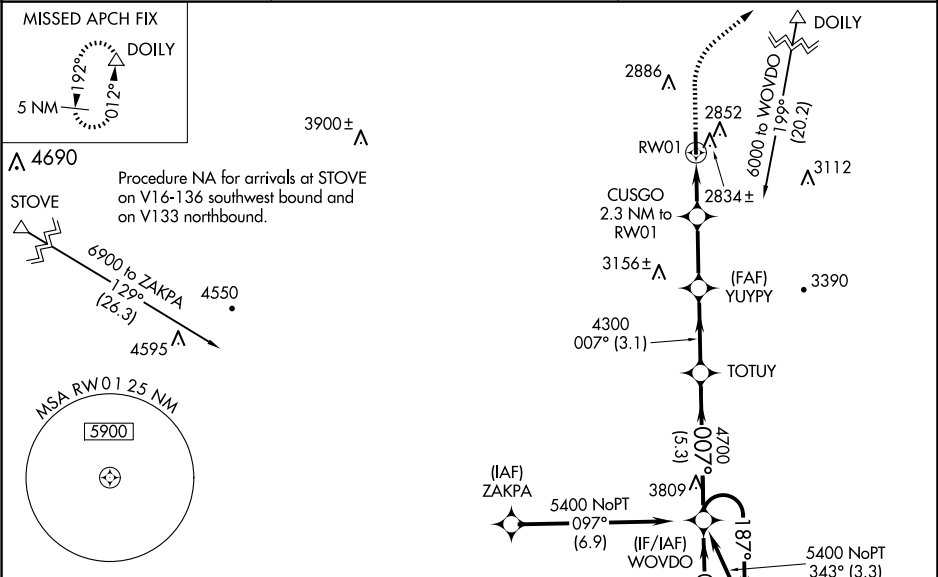
WAAS CH <b>69527</b> <b>W01A</b>	APP CRS <b>007°</b>	Rwy Idg TDZE <b>2694</b> Apt Elev <b>2694</b>	<b>4151</b>
--	------------------------	---	-------------

RNAV (GPS) RWY 1

TWIN COUNTY (HLX)

RNP APCH - GPS. ▼ Baro-VNAV NA when using Dublin altimeter setting. For uncompensated Baro-VNAV systems, LNAV/VNAV NA below -20°C or above 54°C. Rwy 1 helicopter visibility reduction below ¾ SM NA. VDP NA with Dublin altimeter setting. When local altimeter setting not received, use Dublin altimeter setting: increase LPV DA to 3103 feet and all visibilities ½ SM; increase LNAV/VNAV DA to 3154 feet and all visibilities ½ SM; increase all MDAs 140 feet and visibility LNAV Cats C and D ½ SM and Circling Cat C ¼ SM and Cat D ½ SM.	MISSED APPROACH: Climb to 3200 then climbing right turn to 5100 direct DOILY and hold, continue climb-in-hold to 5100.
--	--

AWOS-3 <b>118.375</b>	ROANOKE APP CON <b>126.0 339.8</b>	UNICOM <b>122.8 (CTAF) 0</b>
--------------------------	---------------------------------------	---------------------------------



ELEV 2694	TDZE 2694
-----------	-----------

