

APP CRS
038°

Rwy Idg
TDZE
161

Apt Elev
163

RNAV (GPS) RWY 4

MC MINNVILLE MUNI (MMV)

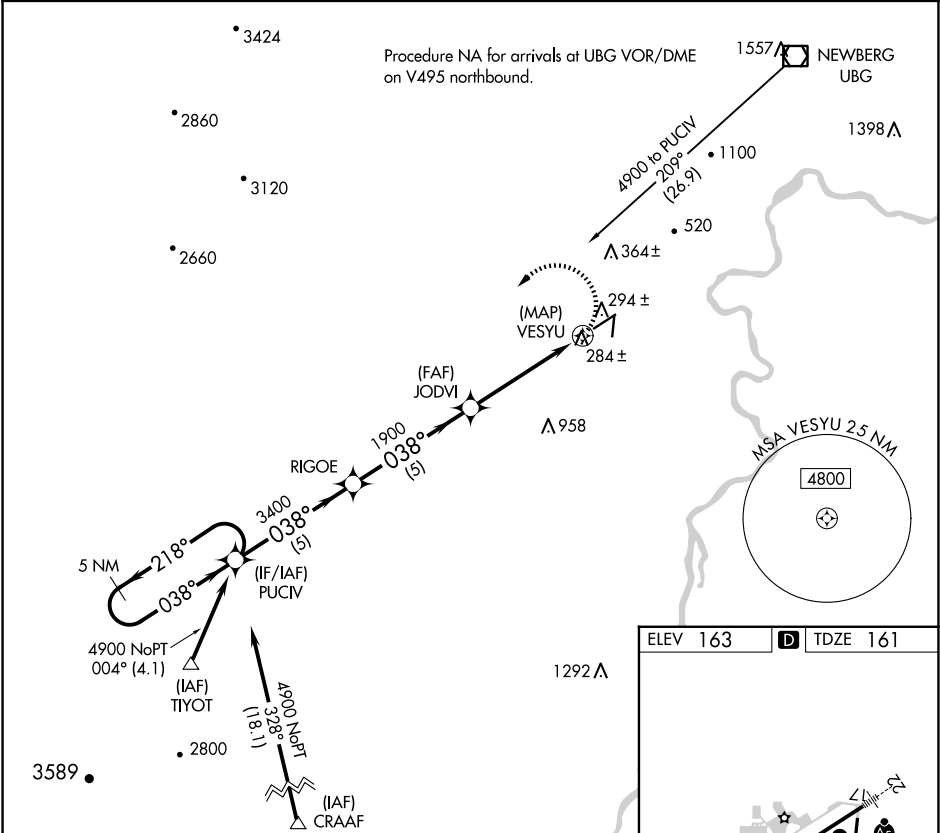
RNP APCH.

▼

When local altimeter setting not received, use Aurora State altimeter setting and increase all MDA 60 feet and visibility Cats C/D to 1¾. Rwy 4 helicopter visibility reduction below ¾ SM NA.

MISSED APPROACH: Climbing left turn to 4900 direct PUCIV and hold, continue climb-in-hold to 4900.

ASOS 135.675	PORTLAND APP CON 126.0 284.6 (NORTH)	SEATTLE CENTER 125.8 291.7 (SOUTH)	CLNC DEL 118.35	UNICOM 123.0 (CTAF) 0
------------------------	--	--	---------------------------	---------------------------------



5 NM Holding Pattern

4900 ← 218°
038° →

PUCIV

Visual Segment - Obstacles.

RIGOE

JODVI

VESYU

4900

PUCIV

5420 X 100

4340 X 75

35

038°

CATEGORY	A	B	C	D
LNAV MDA	600-1	439 (500-1)	600-1¼	439 (500-1¼)

ELEV 163

TDZE 161

REIL Rwy 4 0

HIRL Rwy 4-22 0