

WAAS CH 50309 W22A	APP CRS 218°	Rwy Idg 5420 TDZE 161 Apt Elev 163
--	------------------------	---

RNAV (GPS) RWY 22

MC MINNVILLE MUNI (MMV)

RNP APCH.

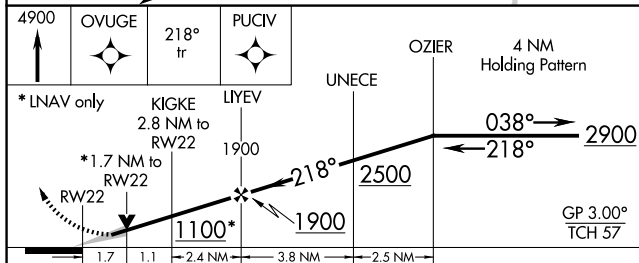
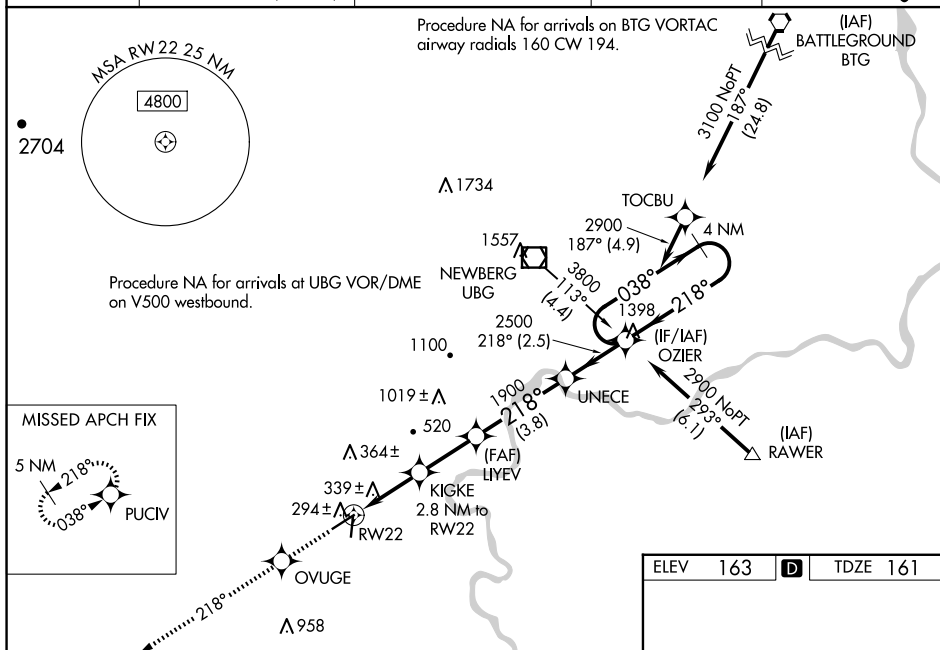
V Baro-VNAV NA when using Aurora State altimeter setting. For uncompensated Baro-VNAV systems, LNAV/VNAV NA below -15°C or above 48°C. When local altimeter setting not received, use Aurora State altimeter setting; increase LPV DA to 534 feet, LNAV/VNAV DA to 703 feet; increase all MDAs 60 feet and visibility LNAV Cats C and D ½ SM. For inop ALS, increase LPV all Cats visibility to ¾ SM, LNAV/VNAV all Cats to 1 ½ SM, LNAV Cat A/B to 1 SM and Cat C/D to 1 ½ SM. For inop ALS when using Aurora State altimeter setting, increase LNAV/VNAV all Cats visibility to 1 ½ SM, LNAV Cat A/B to 1 SM and Cat C/D to 1 ½ SM. VDP NA when using Aurora State altimeter setting.

MALSR

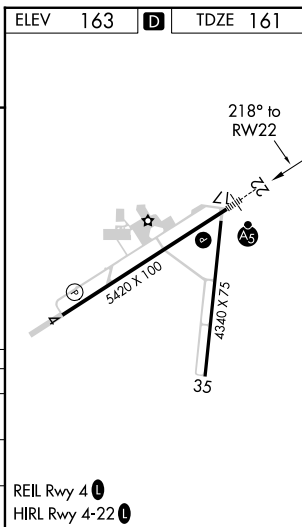


MISSED APPROACH:
Climb to 4900 direct
OVUGE then on 218°
track to PUCIV and hold,
continue climb-in-hold
to 4900.

ASOS 135.675	PORTLAND APP CON 126.0 284.6 (NORTH)	SEATTLE CENTER 125.8 291.7 (SOUTH)	CLNC DEL 118.35	UNICOM 123.0 (CTAF) 1
------------------------	--	--	---------------------------	--



CATEGORY	A	B	C	D
LPV DA	474-3/4 313 (400-3/4)			
LNAV/VNAV DA	643-1 1/4 482 (500-1 1/4)			
LNAV MDA	740-3/4 579 (600-3/4)		740-1 1/4 579 (600-1 1/4)	



RNAV (GPS) RWY 22