

WAAS CH 82641 W17A	APP CRS 167°	Rwy Ldg TDZE Apt Elev	4000 722 722
--	------------------------	-----------------------------	---

RNAV (GPS) RWY 17

FORT MADISON MUNI (F'SW)

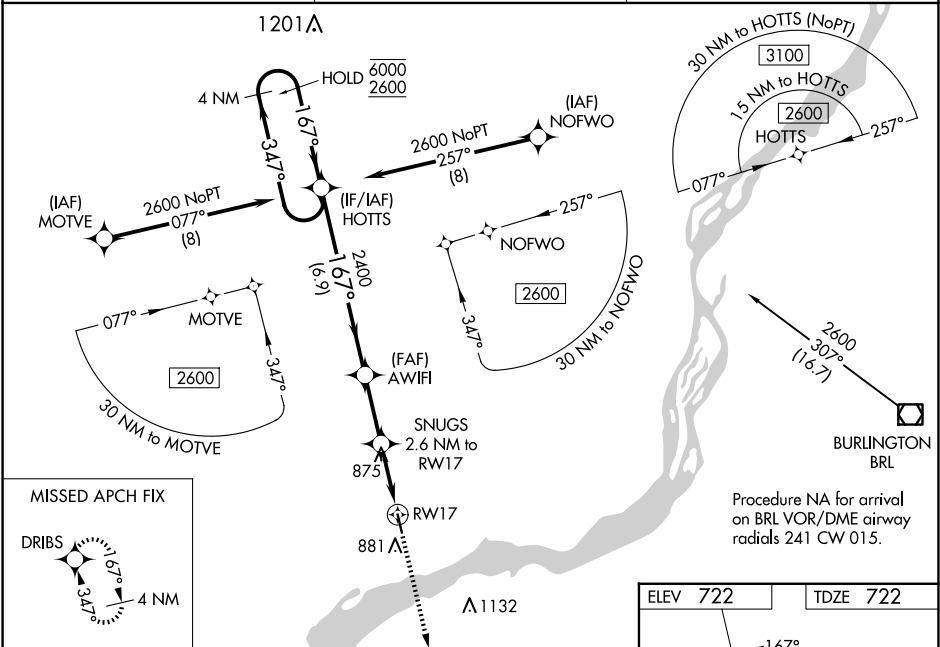
RNP APCH - GPS.

⚠

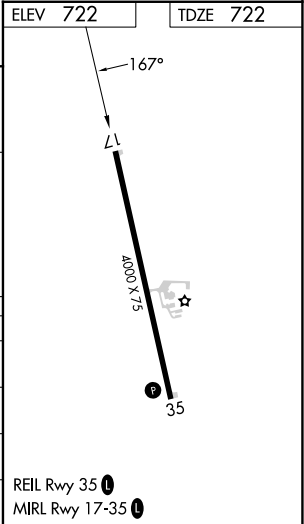
For uncompensated Baro-VNAV systems, LNAV/VNAV NA below -16°C or above 54°C. Baro-VNAV and VDP NA when using BRL altimeter setting. When local altimeter setting not received, use BRL altimeter setting; increase LPV DA to 1004 feet; increase LNAV/VNAV DA to 1004 feet; increase all MDAs 40 feet and LNAV visibility Cats C and D ¼ SM, and Circling visibility Cat D ¼ SM.

MISSED APPROACH: Climb to 2600 direct DRIBS and hold.

AWOS-3 120.925	CHICAGO CENTER 135.6 316.1	UNICOM 122.8 (CTAF) 📶
--------------------------	--------------------------------------	--



HOTS		AWIFI		SNUGS 2.6 NM to RW17		DRIBS
4 NM Holding Pattern		2400		1.2 NM to RW17		
6000 ← 347°		2400		RW17		
2600 → 167°		1580		1.2 NM		
GP 3.00° TCH 50		6.9 NM		2.5 NM		
CATEGORY	A	B	C	D		
LPV DA	972-1		250 (300-1)			
LNAV/VNAV DA	972-1		250 (300-1)			
LNAV MDA	1140-1	418 (500-1)	1140-1 1/8	418 (500-1 1/8)		
CIRCLING	1200-1	478 (500-1)	1260-1 1/2	538 (600-1 1/2)	1500-2 1/2	778 (800-2 1/2)



NC-3, 10 JUL 2025 to 07 AUG 2025

NC-3, 10 JUL 2025 to 07 AUG 2025