

VORTAC CYN	APP CRS	Rwy Idg	5835
113.4	054°	TDZE	81
Chan 81		Apt Elev	86

VOR RWY 6

OCEAN COUNTY (MJX)

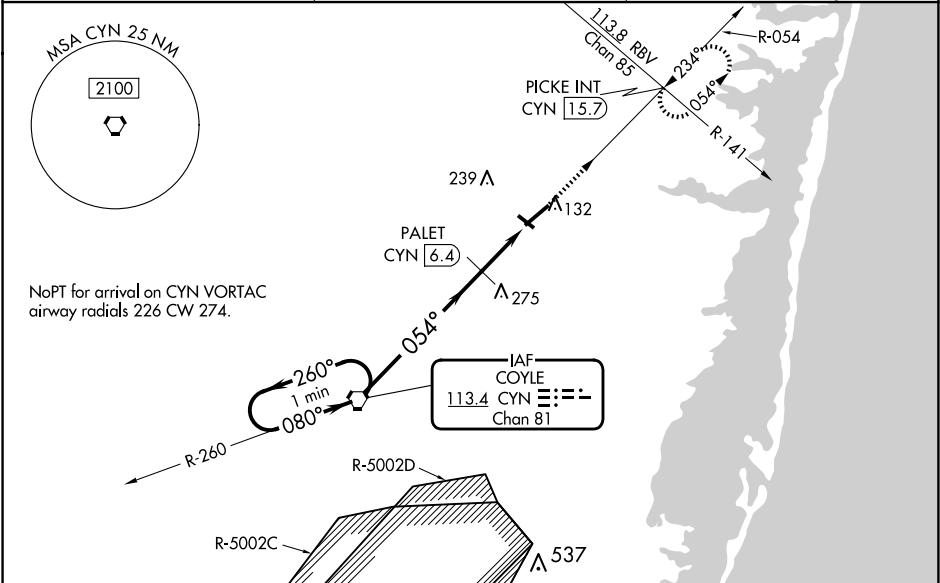
NA

Circling Rwy 14, 32 NA at night. For inop ALS, increase S-6 Cat A visibility to 1, S-6 Cats C/D visibility to 2, and PALET Fix Minimums S-6 Cats A/B visibility to 1. When local altimeter setting not received, use Mc Guire Fld (Joint Base Mc Guire Dix Lakehurst) altimeter setting and increase all MDA 60 feet; increase S-6 Cats C/D visibility ½ mile, Circling Cat C visibility ½ mile, and Circling Cat D visibility ¼ mile; increase PALET Fix Minimums Circling Cat D visibility ¼ mile. For inop ALS when using Mc Guire Fld (Joint Base Mc Guire Dix Lakehurst) altimeter setting, increase S-6 Cat A visibility to 1, Cats C/D visibility to 2½, and PALET Fix Minimums Cats A/B visibility to 1. Rwy 6 helicopter visibility reduction below ¾ SM NA. VDP NA when using Mc Guire Fld (Joint Base Mc Guire Dix Lakehurst) altimeter setting.

MALSR

MISSED APPROACH: Climb to 2500 on CYN R-054 to PICKE INT/CYN 15.7 DME and hold.

AWOS-3PT	MC GUIRE FLD CON	UNICOM
119.875	126.475 363.8	122.7 (CTAF) 0



ELEV 86	TDZE 81
MIRL Rwy 14-32	
HIRL Rwy 6-24	
REIL Rws 14, 24 and 32	

One Minute Holding Pattern

VGSI and descent angles not coincident (VGSI Angle 3.00/TCH 56).

2500

CYN R-054

PICKE INT

CYN VORTAC

2000

260°

080°

PALET CYN 6.4

054°

820*

2.80°

TCH 53

CYN 7.4

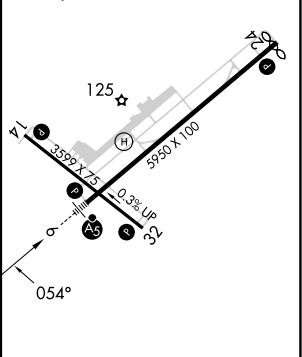
CYN 8.7

*880 when using Joint Base McGuire Dix Lakehurst altimeter setting.

6.4 NM

1 NM

1.3



CATEGORY	A	B	C	D
S-6	820-¾	739 (800-¾)	820-1¾	739 (800-1¾)
CIRCLING	820-1 734 (800-1)	820-1¼ 734 (800-1¼)	820-2 734 (800-2)	820-2¼ 734 (800-2¼)
PALET FIX MINIMUMS				
S-6	540-¾	459 (500-¾)	540-1	459 (500-1)
CIRCLING	540-1 454 (500-1)	560-1 474 (500-1)	580-1½ 494 (500-1½)	700-2 614 (700-2)

FAF to MAP 8.7 NM					
Knots	60	90	120	150	180
Min:Sec	8:42	5:48	4:21	3:29	2:54