

LOC I-MJX	APP CRS	Rwy Idg	5835
109.9	063°	TDZE	81
		Apt Elev	86

ILS or LOC RWY 6

OCEAN COUNTY (MJX)

▼

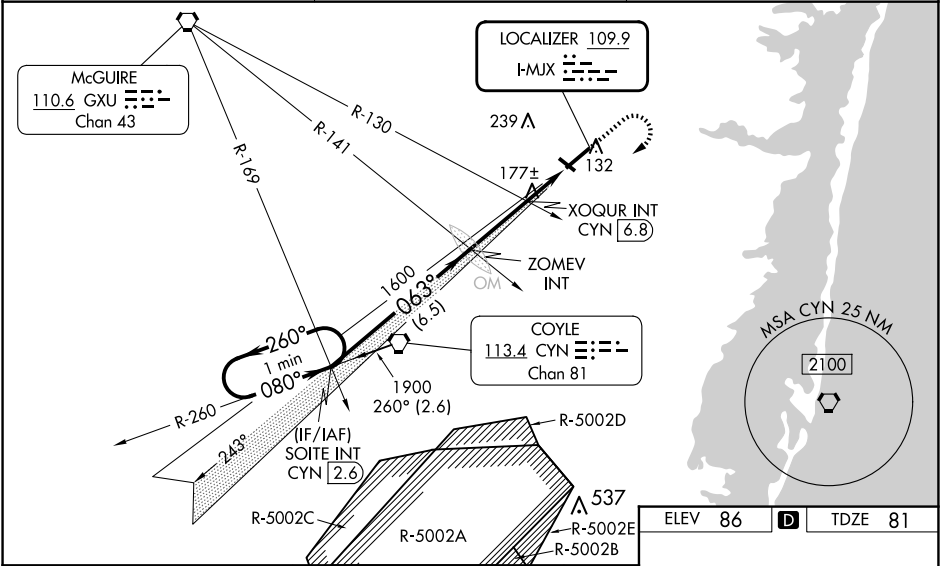
▲ NA

Circling Rwy 14, 32 NA at night. Inop table does not apply to S-ILS 6. For inop ALS, increase S-LOC 6 Cats A/B and S-LOC 6 XOQUR Fix minimums Cats A/B visibility to 1. When local altimeter setting not received, use Mc Guire Fld (Joint Base Mc Guire Dix Lakehurst) altimeter setting and increase all DA 41 feet and all MDA 60 feet; increase S-LOC 6 Cats C/D and Circling Cat C visibility ¾ mile, Cat D ¼ mile; increase XOQUR Fix minimums S-LOC 6 Cat C/D visibility ¾ mile and Circling Cat D ¼ mile. For inop ALS when using Mc Guire Fld (Joint Base Mc Guire Dix Lakehurst) altimeter setting, increase S-ILS 6 all Cats visibility to ¾ and S-LOC 6 Cats A/B and S-LOC 6 XOQUR Fix minimums Cats A/B visibility to 1, Cats C/D visibility to 1 ¾. Rwy 6 helicopter visibility reduction below ¾ SM NA.

MALSRL

MISSED APPROACH:
Climb to 600 then
climbing right turn to
1900 direct CYN
VORTAC then on
CYN R-260 to SOITE
INT/CYN 2.6 DME
and hold.

AWOS-3PT	MC GUIRE APP CON	UNICOM
119.875	126.475 363.8	122.7 (CTAF) 0



*720 when using Joint Base Mc Guire Dix Lakehurst altimeter setting.				
One Minute Holding Pattern				
GS 3.00° TCH 56				
CATEGORY	A	B	C	D
S-ILS 6		331-¾	250 (300-¾)	
S-LOC 6	660-¾	579 (600-¾)	660-1¼	579 (600-1¼)
CIRCLING	660-1	574 (600-1)	660-1¾	700-2
			574 (600-1¾)	614 (700-2)
XOQUR FIX MINIMUMS (DUAL VOR RECEIVERS or DME REQUIRED)				
S-LOC 6	520-¾	439 (500-¾)	520-7/8	439 (500-7/8)
CIRCLING	540-1	560-1	580-1½	700-2
	454 (500-1)	474 (500-1)	494 (500-1½)	614 (700-2)

ELEV 86

TDZE 81

MIRL Rwy 14-32 0

HIRL Rwy 6-24 0

REIL Rwys 14, 24 and 32 0

FAF to MAP 4.6 NM

Knots	60	90	120	150	180
Min:Sec	4:36	3:04	2:18	1:50	1:32