

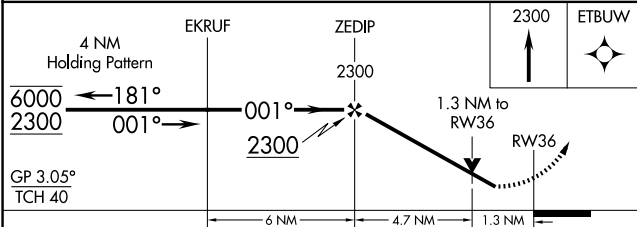
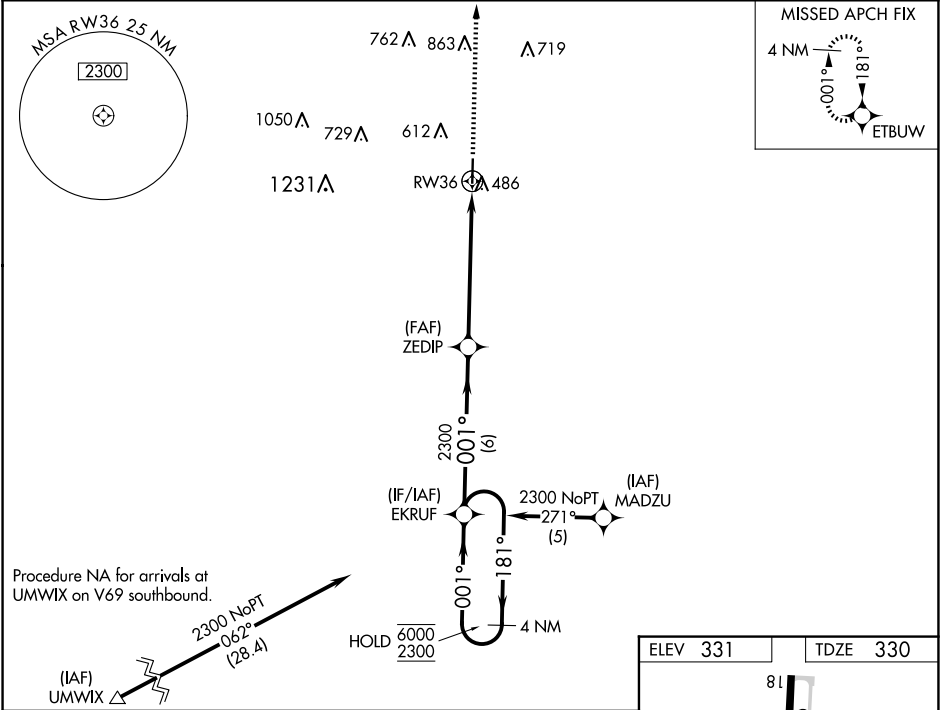
WAAS CH 56399 W36A	APP CRS 001°	Rwy Idg 4718 TDZE 330 Apt Elev 331
--	------------------------	---

RNAV (GPS) RWY 36

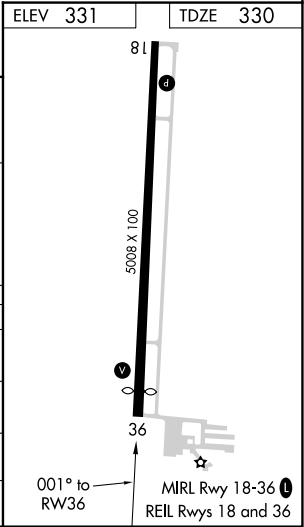
POPLAR BLUFF RGNL BUSINESS (POB)

RNP APCH-GPS.	MISSED APPROACH: Climb to 2300 direct ETBUW and hold.
▼ Rwy 36 helicopter visibility reduction below ¾ SM NA. ▲ For uncompensated Baro-VNAV systems, LNAV/VNAV NA below -23°C or above 54°C.	

ASOS 124.225	MEMPHIS CENTER 120.075 289.4	UNICOM 123.0 (CTAF) 0
------------------------	--	--



CATEGORY	A	B	C	D
LPV DA	669-1 339 (400-1)			
LNAV/VNAV DA	773-1⅜ 443 (500-1⅜)			
LNAV MDA	780-1 450 (500-1)	780-1⅜ 450 (500-1⅜)		
CIRCLING	840-1 509 (600-1)	920-1 589 (600-1)	920-1½ 589 (600-1½)	980-2 649 (700-2)



NC-3, 10 JUL 2025 to 07 AUG 2025

NC-3, 10 JUL 2025 to 07 AUG 2025