

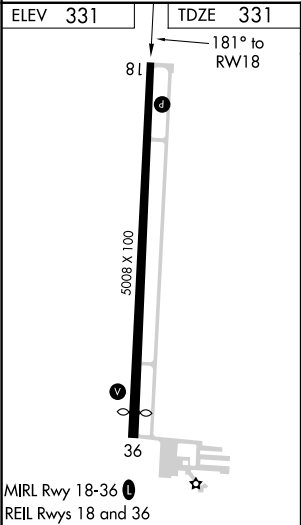
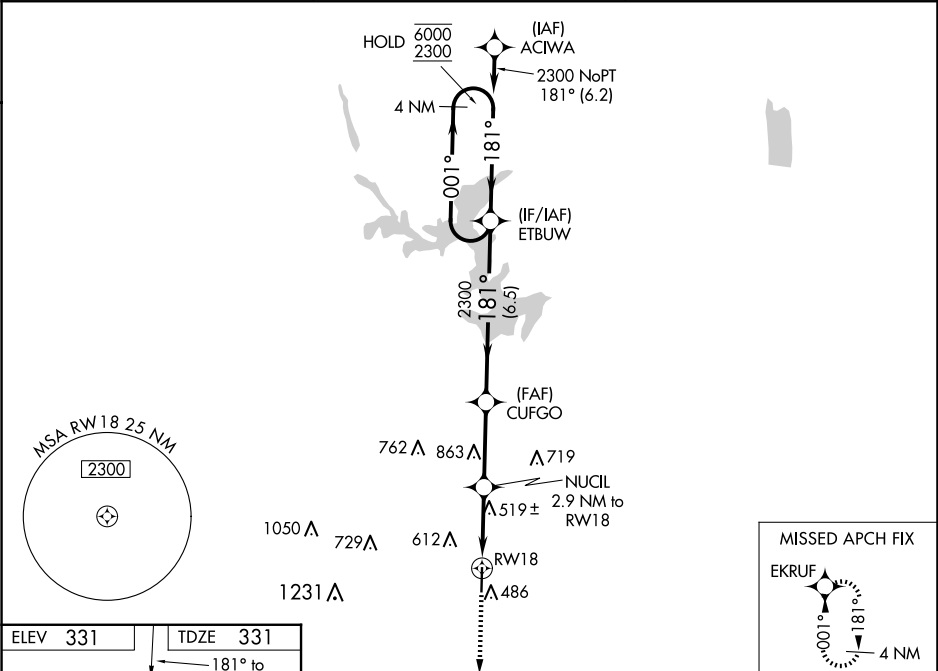
WAAS CH 97499 W18A	APP CRS 181°	Rwy Idg 5008 TDZE 331 Apt Elev 331
--	------------------------	---

RNAV (GPS) RWY 18

POPLAR BLUFF RGNL BUSINESS (POB)

RNP APCH-GPS.	MISSED APPROACH: Climb to 2300 direct EKRUF and hold.
<div><div></div><div>Rwy 18 helicopter visibility reduction below ¾ SM NA. For uncompensated Baro-VNAV systems, LNAV/VNAV NA below -23°C or above 54°C.</div></div>	

ASOS 124.225	MEMPHIS CENTER 120.075 289.4	UNICOM 123.0 (CTAF) 0
------------------------	--	---------------------------------



2300	EKRUF	VGSI and RNAV glidepath not coincident (VGSI Angle 3.00/TCH 30).	CUFGO	ETBUW	4 NM Holding Pattern
		NUCIL 2.9 NM to RW18	2300	181°	001°
		1.3 NM to RW18	1300	2300	181°
		1.3 NM	1.6 NM	3.1 NM	6.5 NM
CATEGORY	A	B	C	D	
LPV DA	634-7/8	303 (400-7/8)			
LNAV/VNAV DA	675-1	344 (400-1)			
LNAV MDA	800-1	469 (500-1)	800-1 3/8	469 (500-1 3/8)	
CIRCLING	840-1 509 (600-1)	920-1 589 (600-1)	920-1 1/2 589 (600-1 1/2)	980-2 649 (700-2)	