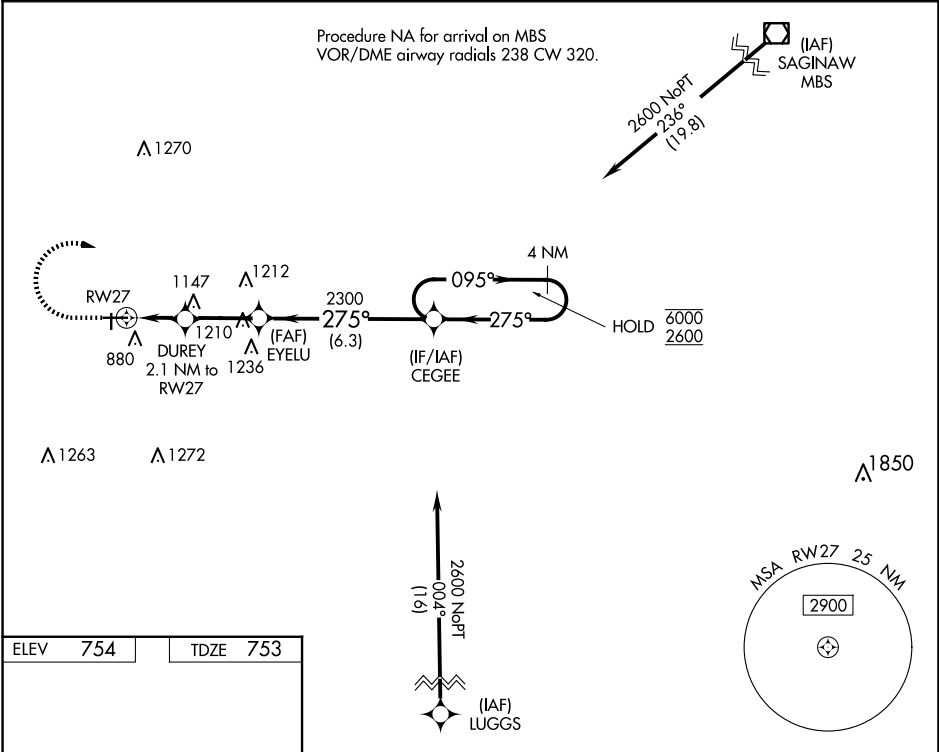


WAAS CH 58028 W27A	APP CRS 275°	Rwy Idg TDZE Apt Elev	5004 753 754
--	------------------------	-----------------------------	---

RNAV (GPS) RWY 27

GRATIOT COMMUNITY (AMN)

RNP APCH.		MISSED APPROACH: Climb to 1900 then climbing right turn 2600 direct CEGEE and hold.
▼ For uncompensated Baro-VNAV systems, LNAV/VNAV NA below -16°C or above 54°C. ▲		
AWOS-3P 124.175	GREAT LAKES APP CON★ 126.45 235.625	UNICOM 122.8 (CTAF) 0



1900

↑

2600

↷

CEGEE

✧

*LNAV only.

DUREY
2.1 NM to RW27

EYELU
2300

CEGEE
4 NM Holding Pattern

095° → 6000
← 275° 2600

GP 3.00°
TCH 40

*1.2 NM to RW27

*1460

2300

1.2 NM 0.9 NM 2.6 NM 6.3 NM

CATEGORY	A	B	C	D
LPV DA		1003-1	250 (300-1)	
LNAV/VNAV DA		1036-1	283 (300-1)	
LNAV MDA	1160-1	407 (500-1)	1160-1½	407 (500-1½)

REIL Rwy 9 and 27

MIRL Rwy 9-27 and 18-36

1

2

REIL Rwy 9 and 27 **0**
MIRL Rwy 9-27 and 18-36 **0**