

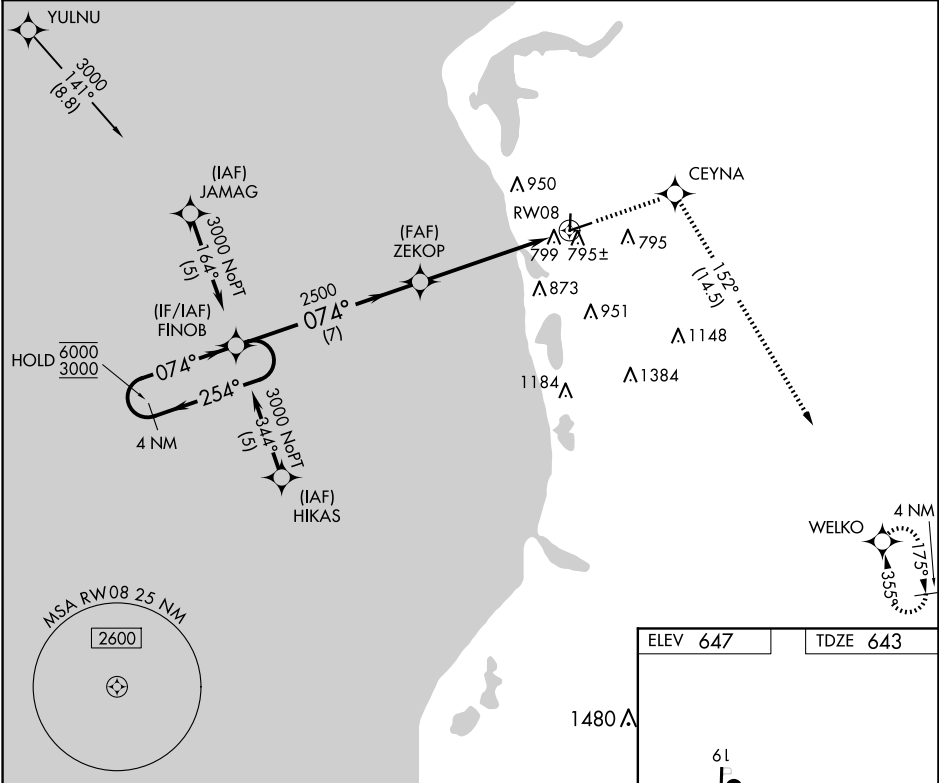
APP CRS	Rwy Idg	5003
074°	TDZE	643
	Apt Elev	647

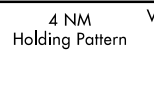
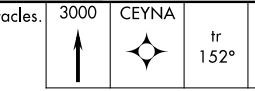
RNAV (GPS) RWY 8

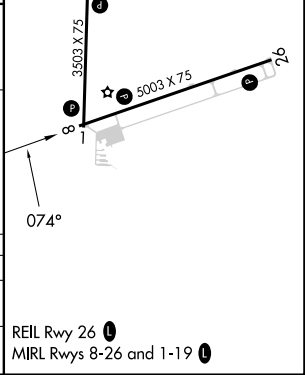
MASON COUNTY (LDM)

RNP APCH-GPS.	MISSED APPROACH: Climb to 3000 direct CEYNA and on track 152° to WELKO and hold.
<div><div>▼</div><div>▲</div></div> <div>Circling Rwy 1, 19 NA at night. Rwy 8 helicopter visibility reduction below ¾ SM NA.</div>	

AWOS-3 119.925	MINNEAPOLIS CENTER 120.85 322.35	UNICOM 123.0 (CTAF) 0
-------------------	-------------------------------------	--------------------------



4 NM Holding Pattern		Visual Segment - Obstacles.		3000	CEYNA	tr 152°	WELKO
		FINOB					
6000 ← 254°		074° →		ZEKOP			
3000		074°		2500			
		7 NM		1.5 NM to RW08			
				RW08			
CATEGORY	A	B	C	D			
LNAV MDA	1140-1	497 (500-1)	1140-1⅓	497 (500-1⅓)			
CIRCLING	1160-1 513 (600-1)	1200-1 553 (600-1)	1260-1¾ 613 (700-1¾)	1460-2¾ 813 (900-2¾)			



EC-1, 10 JUL 2025 to 07 AUG 2025

EC-1, 10 JUL 2025 to 07 AUG 2025