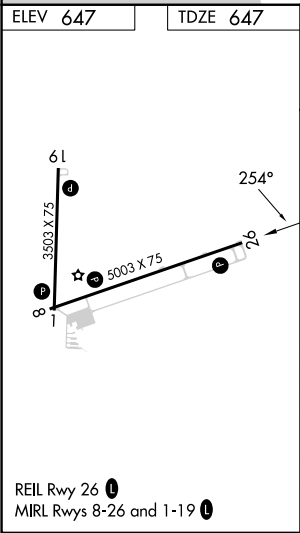
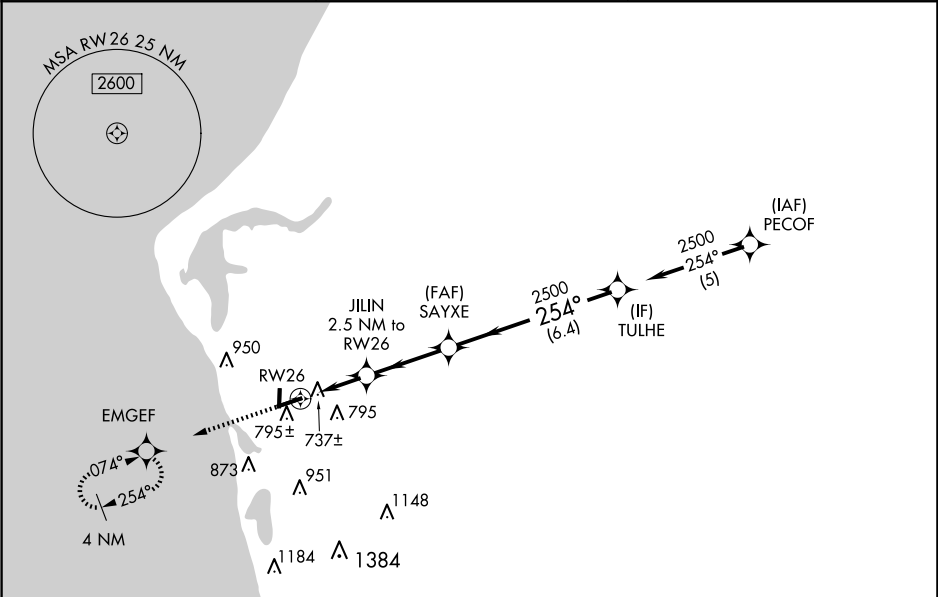


WAAS CH <b>49206</b> <b>W26A</b>	APP CRS <b>254°</b>	Rwy Idg <b>5003</b> TDZE <b>647</b> Apt Elev <b>647</b>
--	------------------------	---

RNAV (GPS) RWY 26  
MASON COUNTY (LDM)

RNP APCH-GPS.		MISSED APPROACH: Climb to 2500 direct EMGEF and hold.
<div><div></div><div></div></div> <div>Circling Rwy 1, 19 NA at night. Rwy 26 helicopter visibility reduction below ¾ SM NA. For uncompensated Baro-VNAV systems, LNAV/VNAV NA below -16°C or above 54°C.</div>		

AWOS-3 <b>119.925</b>	MINNEAPOLIS CENTER <b>120.85 322.35</b>	UNICOM <b>123.0 (CTAF) 0</b>
--------------------------	--	---------------------------------



2500	EMGEF	VGSI and RNAV glidepath not coincident (VGSI Angle 3.00/TCH 25).			
		JILIN 2.5 NM to RW26	SAYXE 2500	TULHE	
		1.1 NM to RW26	1480	254°	2500
		1.1	1.4 NM	3.1 NM	6.4 NM
CATEGORY	A	B	C	D	
LPV DA	975-1		328 (400-1)		
LNAV/ VNAV DA	1020-1		373 (400-1)		
LNAV MDA	1020-1		373 (400-1)		
CIRCLING	1160-1 513 (600-1)	1200-1 553 (600-1)	1260-1¾ 613 (700-1¾)	1460-2¾ 813 (900-2¾)	