

WAAS CH 58013 W09A	APP CRS 088°	Rwy Idg TDZE Apt Elev	5100 916 926
--	------------------------	-----------------------------	---

RNAV (GPS) RWY 9

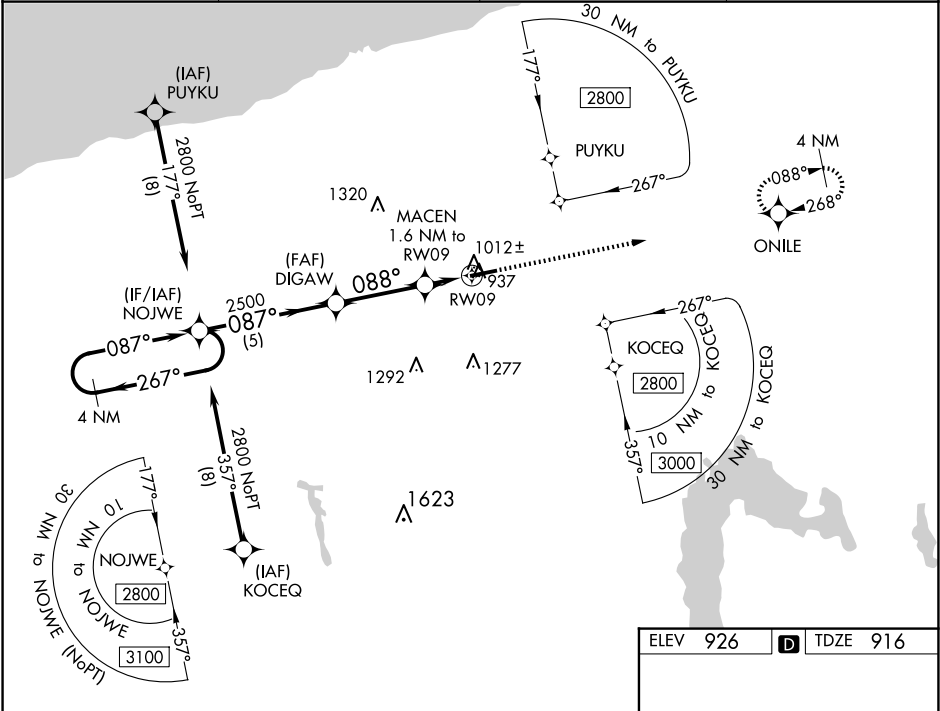
NORTHEAST OHIO RGNL (HZY)

▼

For uncompensated Baro-VNAV systems, LNAV/VNAV NA below -21°C (-5°F) or above 54°C (130°F).
DME/DME RNP-0.3 NA.

MISSED APPROACH: Climb to 3000 direct ONILE and hold.

ASOS 118.325	BUFFALO APP CON★ 121.0	UNICOM 122.8 (CTAF)	123.3
------------------------	----------------------------------	-------------------------------	--------------



ELEV 926 TDZE 916

3000 ONILE

* LNAV only

* 1 NM to RW09

RW09

GP 3.00°

TCH 45

0.3% UP

5900 X 100

REIL Rwy 9 and 27
HIRL Rwy 9-27