
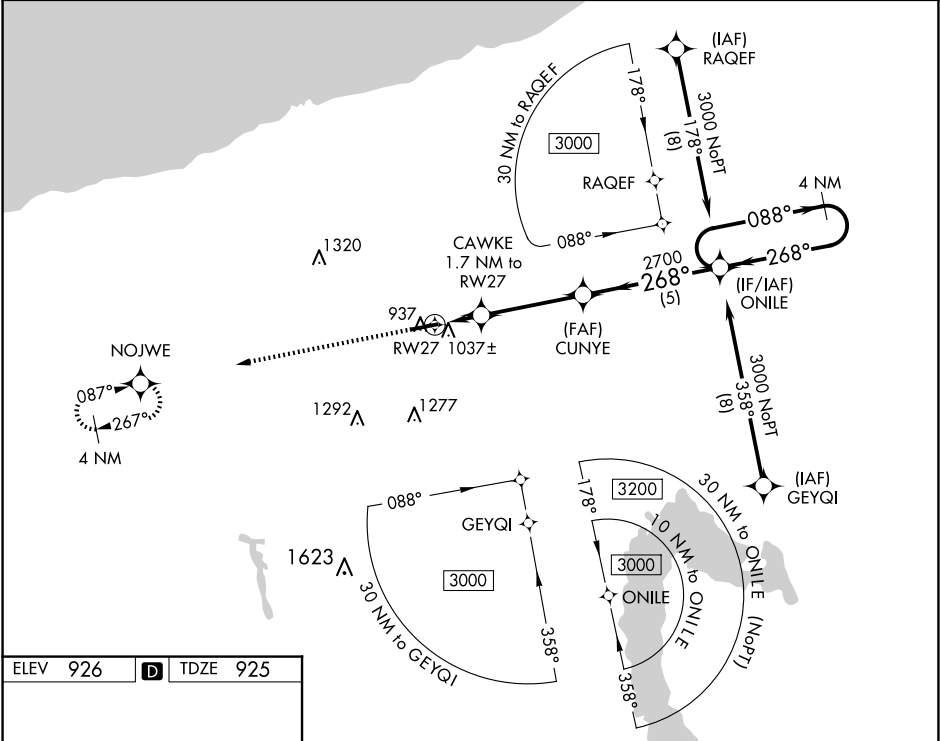


WAAS CH 72713 W27A	APP CRS 268°	Rwy Idg TDZE 925 Apt Elev 926	5100 925 926
--	------------------------	---	---

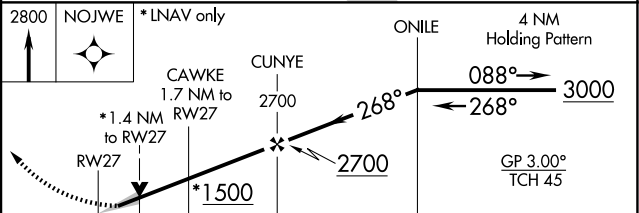
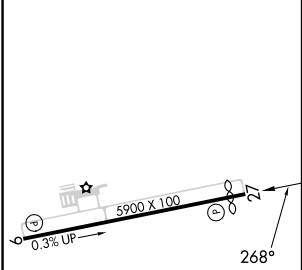
RNAV (GPS) RWY 27
NORTHEAST OHIO RGNL (HZY)

 For uncompensated Baro-VNAV systems, LNAV/VNAV NA below -21°C (-5°F) or above 54°C (130°F). DME/DME RNP-0.3 NA.	MISSED APPROACH: Climb to 2800 direct NOJWE and hold.
---	---



ASOS 118.325	BUFFALO APP CON ★ 121.0	UNICOM 122.8 (CTAF)	123.3 
------------------------	-----------------------------------	-------------------------------	--



ELEV 926		TDZE 925
-----------------	---	-----------------



CATEGORY	A	B	C	D
LPV DA		1184-7/8	259 (300-7/8)	
LNAV/VNAV DA		1198-7/8	273 (300-7/8)	
LNAV MDA		1300-1	375 (400-1)	
CIRCLING	1340-1 414 (500-1)	1380-1 454 (500-1)	1500-1½ 574 (600-1½)	1580-2 654 (700-2)

REIL Rwy 9 and 27 
HIRL Rwy 9-27 

EC-2, 10 JUL 2025 to 07 AUG 2025

EC-2, 10 JUL 2025 to 07 AUG 2025