


WAAS CH <b>82707</b> <b>W30B</b>	APP CRS <b>295°</b>	Rwy Ldg TDZE <b>5599</b> Apt Elev <b>5673</b>
--	------------------------	---

RNAV (GPS) RWY 30R  
ROCKY MOUNTAIN METRO (BJC)

**NA** Baro-VNAV and VDP NA when using Denver Intl altimeter setting. For uncompensated Baro-VNAV systems, LNAV/VNAV NA below -26°C (-14°F) or above 47°C (116°F). DME/DME RNP-0.3 NA. When local altimeter setting not received, use Denver Intl altimeter setting and increase all DA 82 feet and all MDA 100 feet, increase LNAV/VNAV all Cats, LNAV Cat C/D and Circling Cat C visibility ¼ mile. For inoperative MALSR, increase LNAV/VNAV all Cats visibility to 1 ½ mile and LNAV Cat C/D visibility to 1 mile. For inoperative MALSR, when using Denver Intl altimeter setting, increase LPV all Cats visibility to 1 mile, LNAV/VNAV all Cats visibility to 1 ½ mile and LNAV Cat A/B visibility to 1 mile and Cat C/D visibility to 1 ½ mile.

**MALSR**



**MISSED APPROACH:** Climb to 6300 then climbing right turn to 10300 direct HYGEN and hold, continue climb-in-hold to 10300.

ATIS <b>126.25</b>	DENVER APP CON <b>125.12 263.02</b>	METRO TOWER★ <b>118.6 (CTAF) 233.7</b>	GND CON <b>121.7</b>	CLNC DEL <b>132.6</b>
-----------------------	--	---	-------------------------	--------------------------

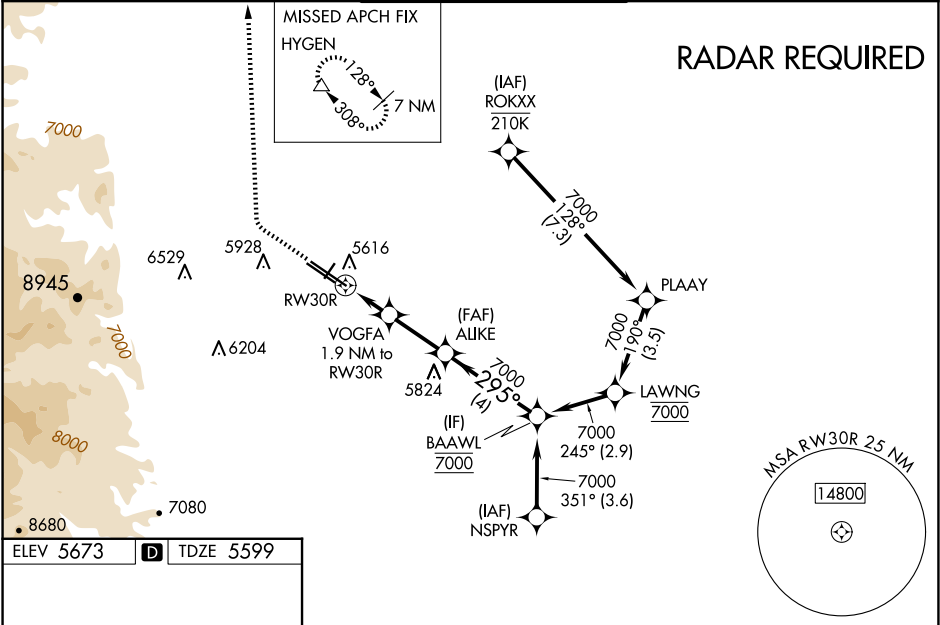


Diagram of the approach path showing altitudes and distances:

- 6300 (Altitude)
- 10300 (Altitude)
- HYGEN (Waypoint)
- ALUKE (Waypoint)
- VOGFA (1.9 NM to RW30R)
- BAOWL (7000) (Altitude)
- RW30R (Runway)
- Distances from RW30R: 1 NM, 0.9, 2.4 NM, 4 NM
- Altitudes: 6220\*, 7000, 295°
- GP 3.00° TCH 52

6300		10300	HYGEN		ALUKE	BAOWL	
↑		↗	△		7000	7000	
*LNAV only.		*1 NM to RW30R		6220*	295°		GP 3.00° TCH 52
RW30R		1 NM		0.9	2.4 NM	4 NM	
CATEGORY		A		B		C	D
LPV	DA	5799-½		200 (200-½)			
LNAV/ VNAV	DA	5900-⅝		301 (300-⅝)			
LNAV	MDA	5940-½		341 (300-½)	5940-⅝		341 (300-⅝)
CIRCLING		6180-1 507 (600-1)		6240-1 567 (600-1)		6360-2 687 (700-2)	
						6860-3 1187 (1200-3)	

HIRL Rwy 12L-30R **L**  
MIRL Rwy 3-21 and 12R-30L **L**  
REIL Rwy 12L, 12R and 30L **L**

SW-1, 10 JUL 2025 to 07 AUG 2025

SW-1, 10 JUL 2025 to 07 AUG 2025