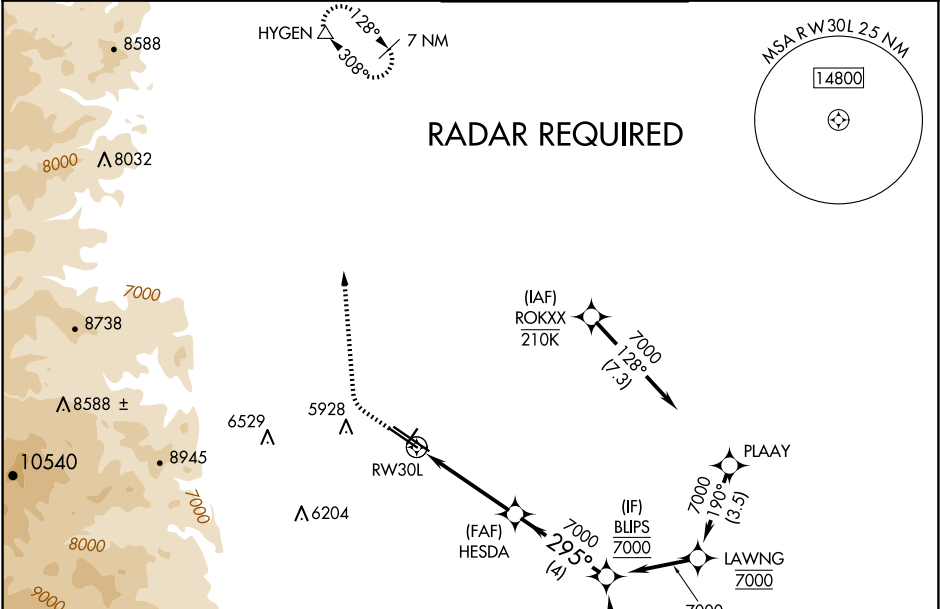


WAAS CH 42508 W30A	APP CRS 295°	Rwy Ldg TDZE 5628 Apt Elev 5673
--	------------------------	---

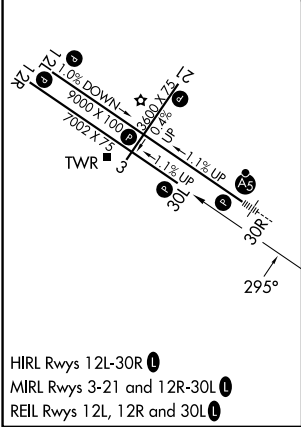
RNAV (GPS) RWY 30L
ROCKY MOUNTAIN METRO (BJC)

<p>⚠ NA</p> <p>Baro-VNAV and VDP NA when using Denver Intl altimeter setting. For uncompensated Baro-VNAV systems, LNAV/VNAV NA below -26°C (-14°F) or above 47°C (116°F). DME/DME RNP-0.3 NA. When local altimeter setting not received, use Denver Intl altimeter setting and increase all DA 82 feet and all MDA 100 feet. Increase LPV all Cats, LNAV/VNAV all Cats, LNAV Cats C/D and Circling Cat C visibility ¼ mile.</p>	<p>MISSED APPROACH: Climb to 6300 then climbing right turn to 10300 direct HYGEM and hold, continue climb-in-hold to 10300.</p>
--	--

ATIS 126.25	DENVER APP CON 125.12 263.02	METRO TOWER ★ 118.6 (CTAF) 0 233.7	GND CON 121.7	CLNC DEL 132.6
-----------------------	--	--	-------------------------	--------------------------



ELEV 5673	D	TDZE 5628
------------------	----------	------------------



6300	10300	HYGEM	HESDA	BLIPS
↑	↪	△	7000	7000
*LNAV only.	*1 NM to RWY30L		295°	7000
	1 NM	3.3 NM	4 NM	
CATEGORY	A	B	C	D
LPV	DA	5828-3/4	200 (200-3/4)	
LNAV/VNAV	DA	5926-1 1/8	298 (300-1 1/8)	
LNAV	MDA	5960-1	332 (300-1)	
C CIRCLING	6180-1 507 (600-1)	6240-1 567 (600-1)	6360-2 687 (700-2)	6860-3 1187 (1200-3)