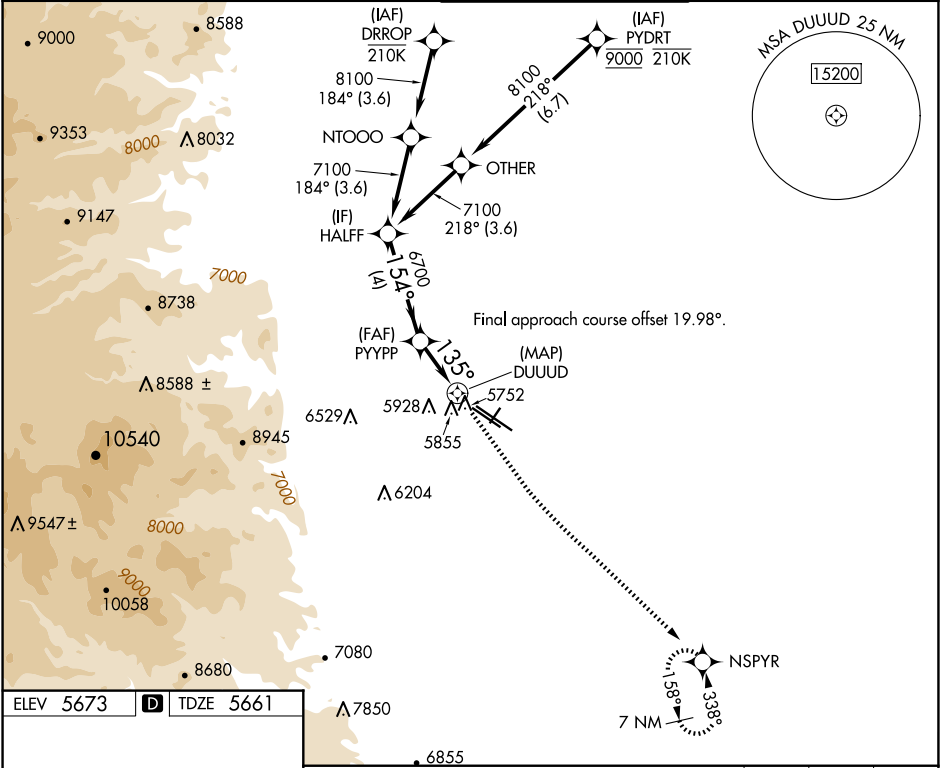


WAAS CH 77938 W12A	APP CRS 135°	Rwy Ldg 9000 TDZE 5661 Apt Elev 5673
--	------------------------	---

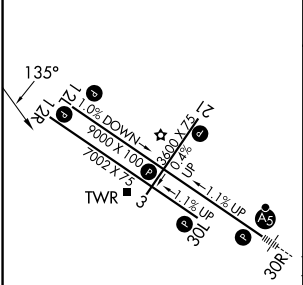
RNAV (GPS) RWY 12L
ROCKY MOUNTAIN METRO (BJC)

RNP APCH. Circling NA for Cat D southwest of Rwy 12R-30L	MISSED APPROACH: Climb to 6200 then climbing left turn to 8400 direct NSPYR and hold.
---	---

ATIS 126.25	DENVER APP CON 125.12 263.02	METRO TOWER ★ 118.6 (CTAF) 233.7	GND CON 121.7	CLNC DEL 132.6
-----------------------	--	---	-------------------------	--------------------------



ELEV 5673	D	TDZE 5661
-----------	---	-----------



HIRL Rwy 12L-30R
MIRL Rwy 3-21 and 12R-30L
REIL Rwy 12L, 12R and 30L

HALFF				6200	8400	NSPYR
7100				6700	DUUUD	
4 NM				2.3 NM	0.8	
CATEGORY	A	B	C	D		
LP MDA	6020-1 359 (400-1)					
LNAV MDA	6120-1 459 (500-1)		6120-1 3/8 459 (500-1 3/8)			
CIRCLING	6180-1 507 (600-1)	6240-1 567 (600-1)	6360-2 687 (700-2)	6360-2 1/4 687 (700-2 1/4)		