

LOC I-BJC	APP CRS	Rwy Ldg	30R	30L
111.7	295°	9000	7002	
		TDZE	5599	5628
		Apt Elev	5673	5673

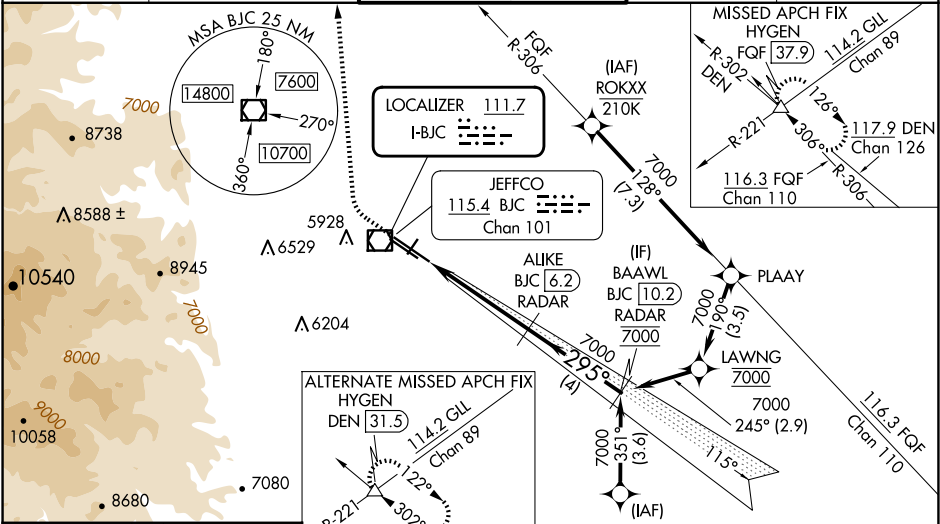
ILS or LOC RWY 30R
ROCKY MOUNTAIN METRO (BJC)

⚠ DME from BJC VOR/DME. Simultaneous reception of I-BJC and BJC DME required. DME or ANA RADAR required. When local altimeter setting not received, use Denver Intl altimeter setting and increase all DA 82 feet and all MDA 100 feet. Increase S-ILS 30R all Cats visibility 3/8 mile. Increase S-LOC 30R Cats B/C/D visibility 1/4 mile. Increase Sidestep R30L Cats A/B visibility 1/4 mile, Cats C/D visibility 1/2 mile and Circling Cat C visibility 1/4 mile. For inoperative MALSRL, increase S-ILS 30R all Cats visibility 1/2 mile and increase S-LOC 30R Cat C/D visibility 3/8 mile. For inoperative MALSRL, when using Denver Intl altimeter setting, increase S-ILS 30R all Cats visibility to 2 1/4 miles. Increase S-LOC 30R Cat B visibility to 1 1/4 mile and Cats C/D visibility to 2 1/2 miles. For inoperative MALSRL, when using Denver Intl altimeter setting, increase S-ILS 30R* all Cats visibility to 1 mile.
* Missed approach requires a minimum climb of 240 feet per NM to 9700.

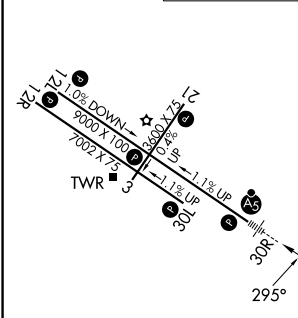
MALSRL

MISSED APPROACH:
Climb to 6380 then climbing right turn to 10200 on heading 360° and on FQF VORTAC R-306 to HYGEN INT/FQF 37.9 DME and hold, continue climb-in-hold to 10200.

ATIS	DENVER APP CON	METRO TOWER*	GND CON	CLNC DEL
126.25	125.12 263.02	118.6 (CTAF) 0 233.7	121.7	132.6



ELEV 5673	TDZE 30R 5599
	TDZE 30L 5628



HIRL Rwy 12L-30R
MIRL Rwy 3-21 and 12R-30L
REIL Rwy 12L, 12R and 30L
FAF to MAP 4.3 NM

Knots	60	90	120	150	180
Min:Sec	4:18	2:52	2:09	1:43	1:26

CATEGORY	A	B	C	D
S-ILS 30R	*5799-1/2 200 (200-1/2)			
S-ILS 30R	6124-1 3/8 525 (500-1 3/8)			
S-LOC 30R	6300-1/2 701 (700-1/2)	6300-1 5/8 701 (700-1 5/8)		
SIDESTEP 30L	6340-1 712 (700-1)	6340-2 712 (700-2)	6340-2 1/4 712 (700-2 1/4)	
CIRCLING	6340-1 667 (700-1)	6360-2 687 (700-2)	6860-3 1187 (1200-3)	

SW-1, 10 JUL 2025 to 07 AUG 2025

SW-1, 10 JUL 2025 to 07 AUG 2025